

NANOSquare

NSQ95-P

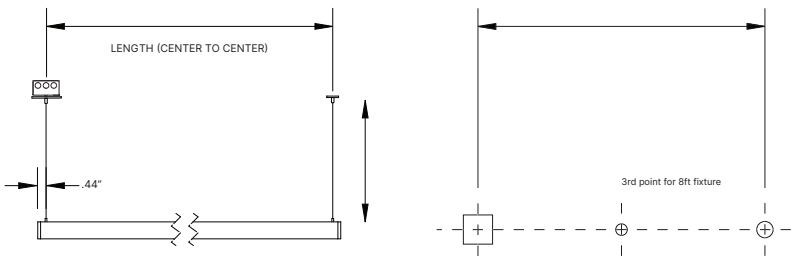
Pendant

What to Know

Risk of fire and electrical shock. Installation requires knowledge of electrical systems and should be installed by a qualified electrician. If not qualified, **DO NOT ATTEMPT INSTALLATION.**

1

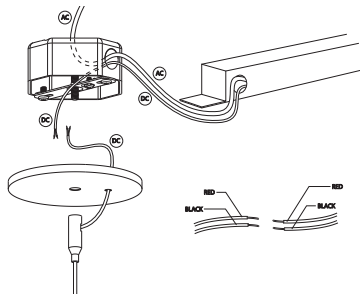
Mark hole locations on the installation surface matching locations of the mounting hardware. Adjust cables to desired length and cut if needed.



Suspension Distance (Center to Center)	
Fixture Length (Nominal)	Hole Distance
4FT, 2 suspension points	47.4"
6FT, 2 suspension points	71.4"
8FT, 3 suspension points	95.4", 47.7"

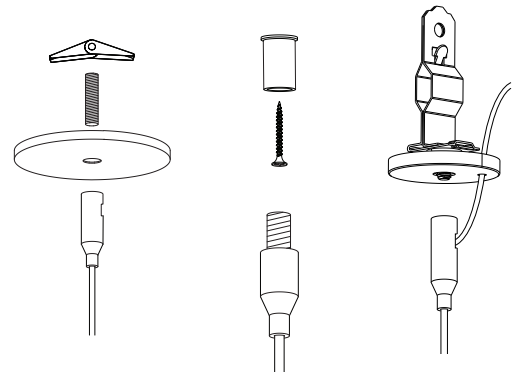
2

Locate and install the remote driver. Feed the AC and DC cables to the Junction box. Feed the fixture cables through the Ceiling Gripper/Canopy and connect to the driver box. If your fixture has an Indirect light source, chose the correct driver for each power cord. Secure canopy. Refer to the wiring diagram.



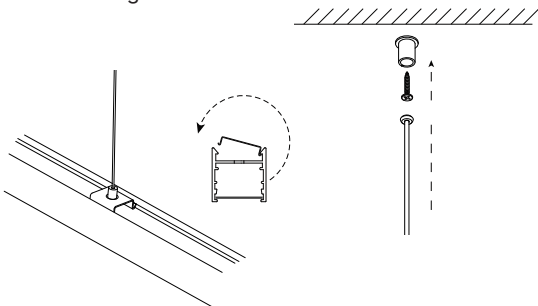
3

Fasten the fixture's non-power cable to the mounting surface using hardware rated for your application.



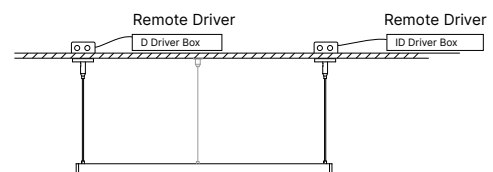
4

For 8ft fixtures, snap center suspension bracket into top channel. Screw coupler into ceiling and adjust cable to length.



5

Final Installation

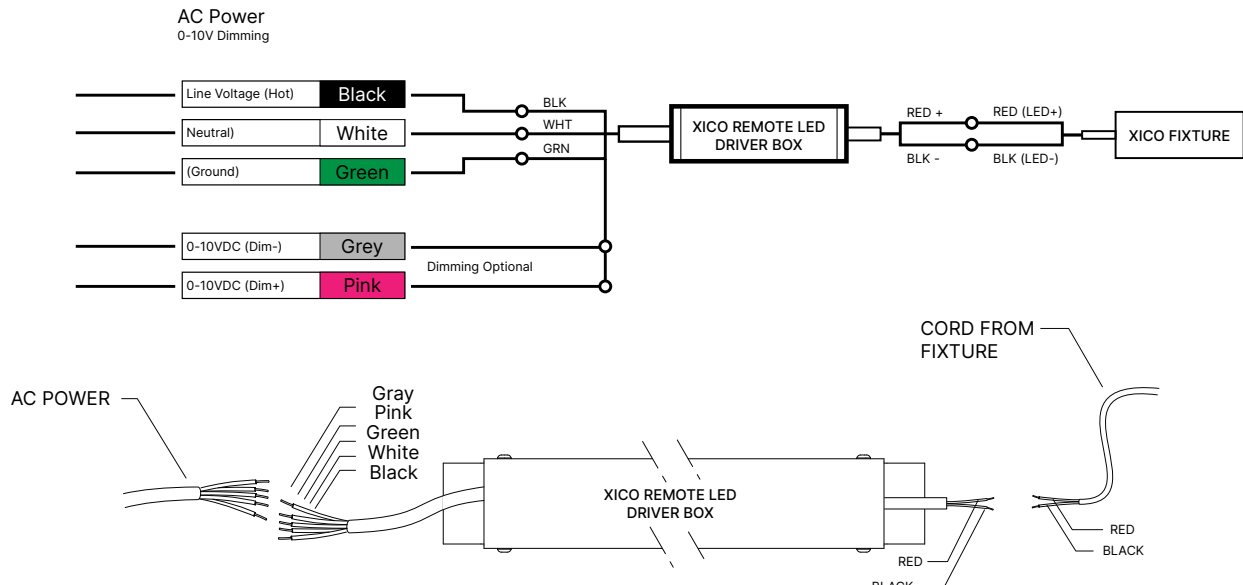


Care Instructions:

Wipe with a soft cloth only. Always avoid using harsh chemicals and/or cleaners.

Wiring Diagram

XICO Driver Box



XICO Driver

