

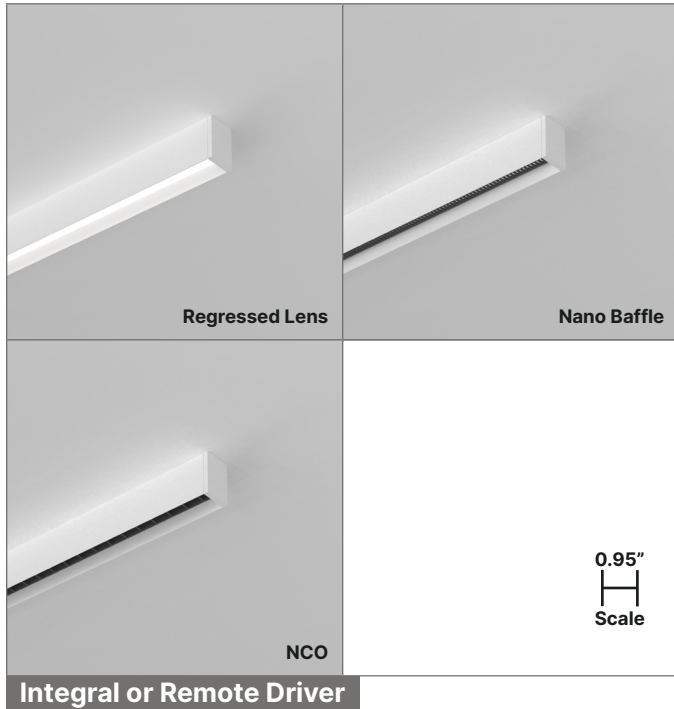
NANOBeam Surface

Direct | Standard Lengths



Project Name _____

Fixture Type _____



DESCRIPTION

0.95" Compact Linear LED Surface Mount

NANOBeam is 0.95" wide, bringing regressed SmartBeam® capabilities to a surface-mounted form factor that complements architectural space. NANOBeam features an integral or remote driver.

FEATURES & BENEFITS

Exceptional Performance

Up to 1,000 lm/ft, 135 lm/W efficacy

Wide Range of LED Selections

Static, Tunable White, and Dim-to-Warm

Designed with Options

Wide choice of SmartOptic® lenses, beam distributions, 80/90/95+ CRI, 2700K to 5000K CCT, and 0-10V, DALI, DMX, and TRIAC dimming

Patented Innovations

Fusion® Optix Inside with unique SmartBeam® capabilities

Proprietary Optical Components

Provides excellent light distribution and high-transmission

Committed to Sustainability

Declare Listed and Red Free List materials

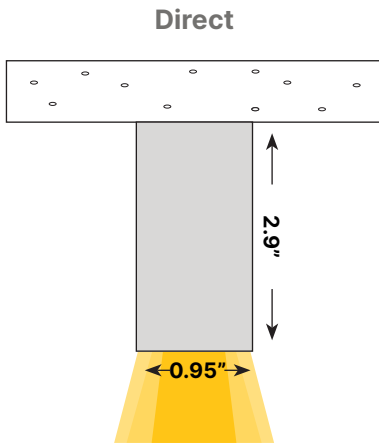
Compliance

UL Listed, Dry and Damp Locations

5-Year Warranty

Standard 5-year warranty, 50,000 hours

LIGHTING CONFIGURATIONS



Designed & Built in
BOSTON

FIXTURE ORDERING

Project Name _____

Fixture Type _____

1) FIXTURE DESIGN

PRODUCT	FIXTURE LENGTH	FINISH	END CAP STYLE
NBE95-S 0.95" Compact Linear LED Surface Mount	2 - 2 ft 4 - 4 ft 6 - 6 ft 8 - 8 ft X_ - Specify Ft', In"	Powder Coated PMW - Matte White PMB - Matte Black PMG - Matte Gray PRAL_ - Specify RAL #	E1 - Flat End Cap
	Custom fixtures are available in 3" increments beyond standard lengths.	Anodized ACL - Clear Anodized ACU_ - Custom Anodized #	

2) LED LIGHT ENGINE

CRI	CCT	OPTIC (DIRECT ONLY)	DIRECT BEAM PATTERN	DIRECT OUTPUT
80 - Std. 80 CRI 90 - Std. 90 CRI 95 - High-Def. 95 CRI SUN - Full SunLike	27 - 2700K 30 - 3000K 35 - 3500K 40 - 4000K XD - Dim-to-Warm ¹ XT - Tunable ¹ X_ - Specify CCT Specify Dim-to-Warm and Tunable between 2700K-6500K.	ORL - Regressed Lens OCR - Continuous Regressed Lens ¹ ONBW - Nano Baffle, White ONBB - Nano Baffle, Black	NN - Not Needed DLAM - Lambertian DM55 - Medium 55° DN40 - Narrow 40° X_ - Specify Beam ²	NN - Not Needed 35 - 350 lm/ft 50 - 500 lm/ft 75 - 750 lm/ft 100 - 1,000 lm/ft X_ - Specify lm/ft
		OSNCOW - Square NCO, White OSNCOB - Square NCO, Black ORNCOW - Round NCO, White ORNCOB - Round NCO, Black ORNCOG - Round NCO, Graphite	DS45 - Nano Cavity Optics Spot 45° DS35 - Nano Cavity Optics Spot 35° DS25 - Nano Cavity Optics Spot 25°	

3) FIXTURE POWER & CONTROLS

LINE VOLTAGE (DC)	DRIVER LOCATION	DRIVER (POWER) ³	
UNV - 120/277V 347 - 347V	ID - Integral Driver	FDND - Factory Non-Dimming FD01 - Factory 0-10V 1% Dim FD10 - Factory 0-10V 10% Dim	
	RD - Remote Driver	FDND - Factory Non-Dimming FD00 - Factory 0-10V 0.1% Dim FD01 - Factory 0-10V 1% Dim FD10 - Factory 0-10V 10% Dim FDDA - Factory DALI 0.1% Dim FDDX - Factory DMX Dim FDTR - Factory TRIAC Dim	

Footnotes: ¹ Continuous Regressed Lens ships on a roll for seamless lens installation. ² Contact factory about custom beam options. ³ Standard driver box is included.

4) FIXTURE MOUNTING & CONNECTIONS

MOUNTING TYPE	POWER CORD	MOUNTING KIT
<p>DJ - Drywall/J-Box Mount/Hard Ceiling Surface TC1 - 9/16" Flat T-Bar Mount TC2 - 9/16" Bolt Slot T-Bar Mount TC3 - 15/16" Flat T-Bar Mount</p> <p>TC1, TC2 and TC3 clips directly to grid t-bar.</p>	<p>P24W - 24" White Cord (Ø 1/8") P24B - 24" Black Cord (Ø 1/8")</p>	<p>SSMB - Stainless Steel Surface Mounting Bracket</p>

OPTIONAL

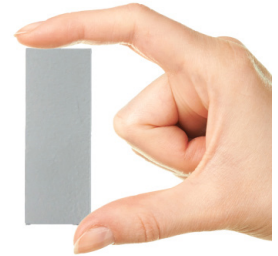
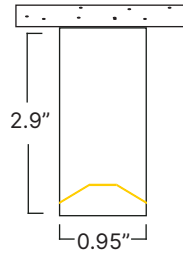
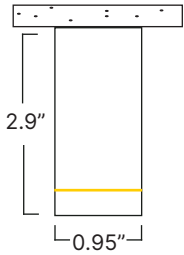
EMERGENCY BACKUP	WIRELESS MODULE
<p>EMC - Emergency Circuit EMB - Emergency Battery (10 W — Remote) X_ - Specify Backup</p> <p>Specify requirements at time of order.</p>	<p>WCN - Wireless Communication Node (Connected to LED Driver In-Fixture or In-Driver Box) PIR - Wireless Communication Node + PIR Sensor (Standard Lens for Low Bay < 10') MW - Wireless Communication Node + MW Sensor (Standard for Low Bay < 10') X_ - Other – Specify Embedded Component or Specific Non-Standard Sensor Detection Range</p>

DIMENSIONS & INSTALLATION

Dimensions

Regressed Lens

Nano Cavity



Standard Fixtures

2ft	23.05" / 23.4"
4ft	47.05" / 47.4"
6ft	71.05" / 71.4"
8ft	95.05" / 95.4"

Lens Length / Fixture Length

Mounting Type

T-Bar Mount

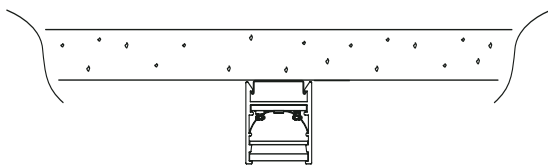
Installs into a ceiling grid system and mount on to, or replace, typical T-Bar elements.

Drywall/J-Box Mount

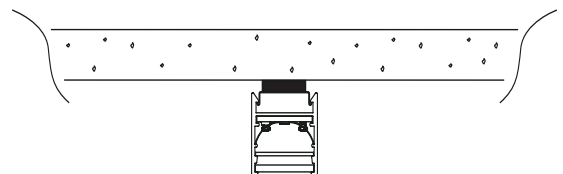
Installs onto a surface via a junction box.

Mounting Options

MK1 - Clip Mount



MK2 - Magnet Mount



MK3 - Fixed Mount



MK4 - Adjustable Mount



SMARTBEAM® TECHNOLOGY

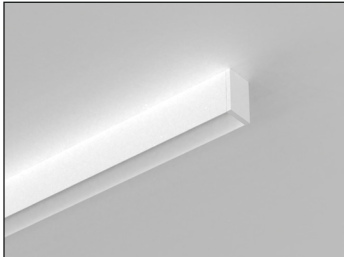
The Ultimate Control of Lighting Distributions

SmartBeam makes it easy to specify the exact light required for any architectural space. Available in every XICO product; it is now possible to create truly tailored and engaging lighting that transform spaces, improves visual comfort, and saves energy.

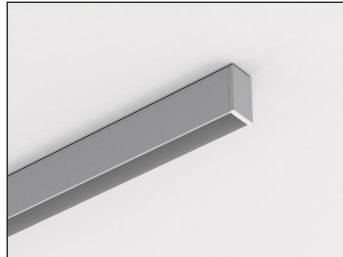
To learn more about our SmartBeam Technology, please click or scan the QR Code.



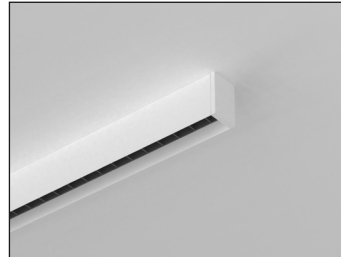
Direct Optics Choices



RL - Regressed Lens



NB - Nano Baffle



NCO - Nano Cavity Optics

DIRECT OPTICS	BEAM PATTERN					
	DLAM	DM55	DN40	DS45	DS35	DS25
Nano Baffle	■	■	■			
Regressed Lens	■	■	■			
NCO				■	■	■

LPW Efficacy Conversion Chart

CODE	CCT SELECTED							
	2200K	2700K	3000K	3500K	4000K	5000K	5700K	6500K
80	-	0.91	0.96	1.00	1.04	1.11	1.11	1.11
90	-	0.91	0.96	1.00	1.04	1.11	1.11	1.11
95	-	0.91	0.96	1.00	1.04	1.11	1.03	1.04
SUN	-	0.90	0.92	1.00	1.01	1.07	1.04	1.05

LPW Performance

	DIRECT					
	DLAM	DM55	DN40	DS45	DS35	DS25
LM/W	111	129	116	82	82	82

	INDIRECT				
	ILAM	IBW120	IFT150	IA6040	IA4560
LM/FT	150	159	155	164	164

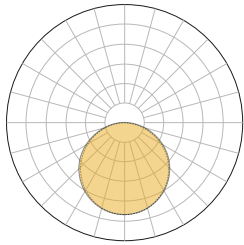
$$LM/W = \frac{\left(\begin{matrix} \text{DIRECT} \\ \text{LM/FT} \end{matrix} + \begin{matrix} \text{INDIRECT} \\ \text{LM/FT} \end{matrix} \right)}{\left(\begin{matrix} \text{DIRECT} \\ \text{W/FT} \end{matrix} + \begin{matrix} \text{INDIRECT} \\ \text{W/FT} \end{matrix} \right)}$$

DIRECT PHOTOMETRICS

48" Length, 80+/3500K CRI/CCT, 3,000 Lumens

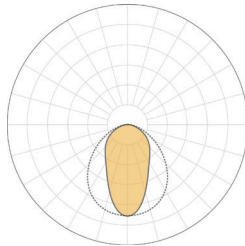
Static White Light

DLAM: Lambertian



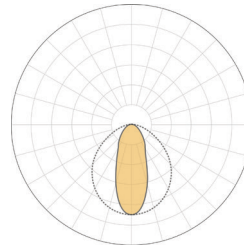
LMFT	W/FT	LM/W
350	3.2	109.4
500	4.6	108.7
750	6.9	108.7
1000	9.2	108.7

DM55: Medium 55°



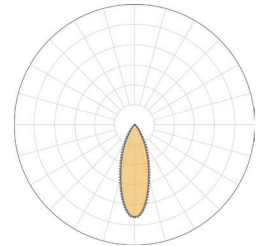
LMFT	W/FT	LM/W
350	2.8	125
500	3.9	128.2
750	5.9	127.1
1000	7.9	126.6

DN40: Narrow 40°



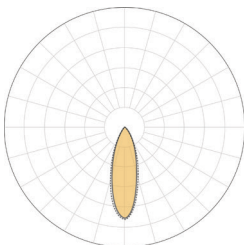
LMFT	W/FT	LM/W
350	2.8	123
500	4	125
750	6	125
1000	8	125

DS45: Nano Cavity Optic Spot 45°



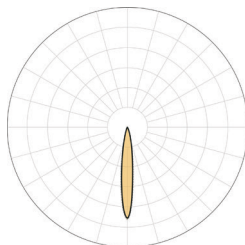
LMFT	W/FT	LM/W
350	4.2	83.3
500	6	83.3
750	9	83.3
1000	12	83.3

DS35: Nano Cavity Optic Spot 35°



LMFT	W/FT	LM/W
350	4.2	83.3
500	6	83.3
750	9	83.3
1000	12	83.3

DS25: Nano Cavity Optic Spot 25°



LMFT	W/FT	LM/W
350	4.2	83.3
500	6	83.3
750	9	83.3
1000	12	83.3

COMPATIBLE OPTIC

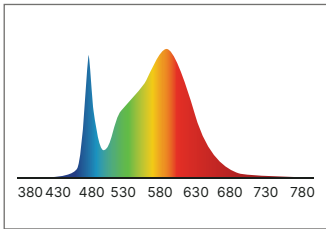
NANO BAFFLE	REGRESSED LENS	NCO

OPTICS CONFIGURATIONS

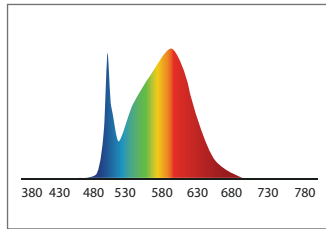
Regressed Lens	Nano Baffle	Square NCO	Round NCO
White Regressed Lens ORL	White Nano Baffle ONBW	White Square NCO OSNCOW	White Round NCO ORNCOW
White Con. Regressed Lens OCR	Black Nano Baffle ONBB	Black Square NCO OSNCOB	Black Round NCO ORNCOB
			Graphite Round NCO ORNCOG

LED OPTIONS

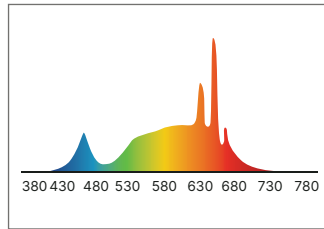
80: Standard 80+ CRI



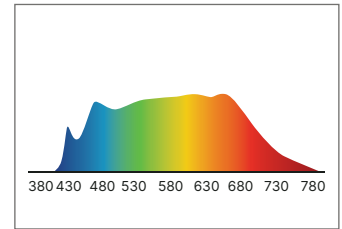
90: Standard 90+ CRI



95: High-Definition 95+CRI



SUN: Full Spectrum "SunLike"



CODE	DESCRIPTION	TYPICAL LED DATA							
		CCT	CRI	CRI R9	TM30 Rf	TM30 Rg	CQS	M/P Ratio	LPW
80	Standard 80 CRI	3500K	82.5	7.8	84	96.7	82.5	0.51	190
90	Standard 90 CRI	3500K	91	54.3	89.3	98.9	89.2	0.55	175
95	High Definition 95 CRI	3500K	97.1	95	-	-	-	0.70	163
SUN	Full Spectrum SunLike®	3500K	95	85	-	-	-	-	130

POWER & CONTROLS

Voltage

Fixture Voltage (AC)

120–277 VAC
347 VAC, 50/60 Hz

Power Location

Integral or Remote

LED Driver

Factory Selected, 36–39V Constant Current

Drivers

FDND - Factory Non-Dimming
FD00 - Factory 0-10V 0.1% Dim
FD01 - Factory 0-10V 1% Dim
FD10 - Factory 0-10V 10% Dim
FDDA - Factory DALI 0.1% Dim
FDDX - Factory DMX Dim
FDTR - Factory TRIAC Dim
LD01 - Lutron Hi-Lume 1% Dim
X_ - Specify Driver

Emergency Backup (Optional)

EMC - Emergency Circuit
EMB - Emergency Battery
(10 W — Remote)
X_ - Specify Backup

Power

10 W

Illumination Time

90 minutes

IP Rating

Suitable for Dry and Damp Locations,
indoor use only

XBox

Remote Driver Boxes (Optional)

To create a clean and organized power solution for multiple fixture installations see our Xbox Specification Guide. Reach out to a XICO Sales Representative to discuss your projects needs.

Compatible Control Options



