

# NANOBeam 45

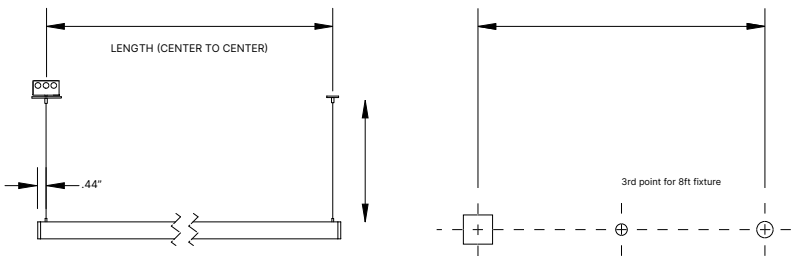
NBE9545-P

## Pendant

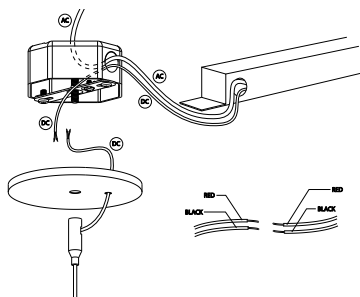
### What to Know

Risk of fire and electrical shock. Installation requires knowledge of electrical systems and should be installed by a qualified electrician. If not qualified, **DO NOT ATTEMPT INSTALLATION.**

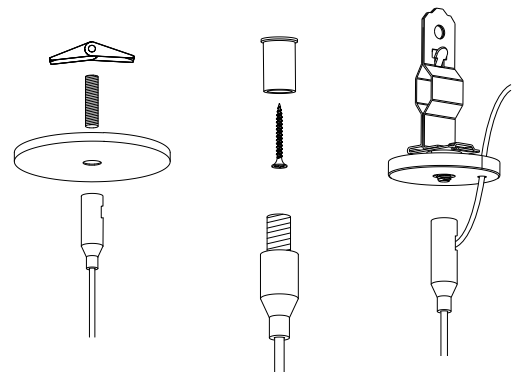
- 1 Mark hole locations on the installation surface matching locations of the mounting hardware. Adjust cables to desired length and cut if needed.



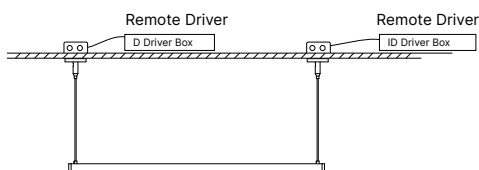
- 2 Locate and install the remote driver. Feed the AC and DC cables to the Junction box. Feed the fixture cables through the Ceiling Gripper/Canopy and connect to the driver box. If your fixture has an Indirect light source, chose the correct driver for each power cord. Secure canopy. Refer to the wiring diagram.



- 3 Fasten the fixture's non-power cable to the mounting surface using hardware rated for your application.



- 4 Final Installation



### Care Instructions:

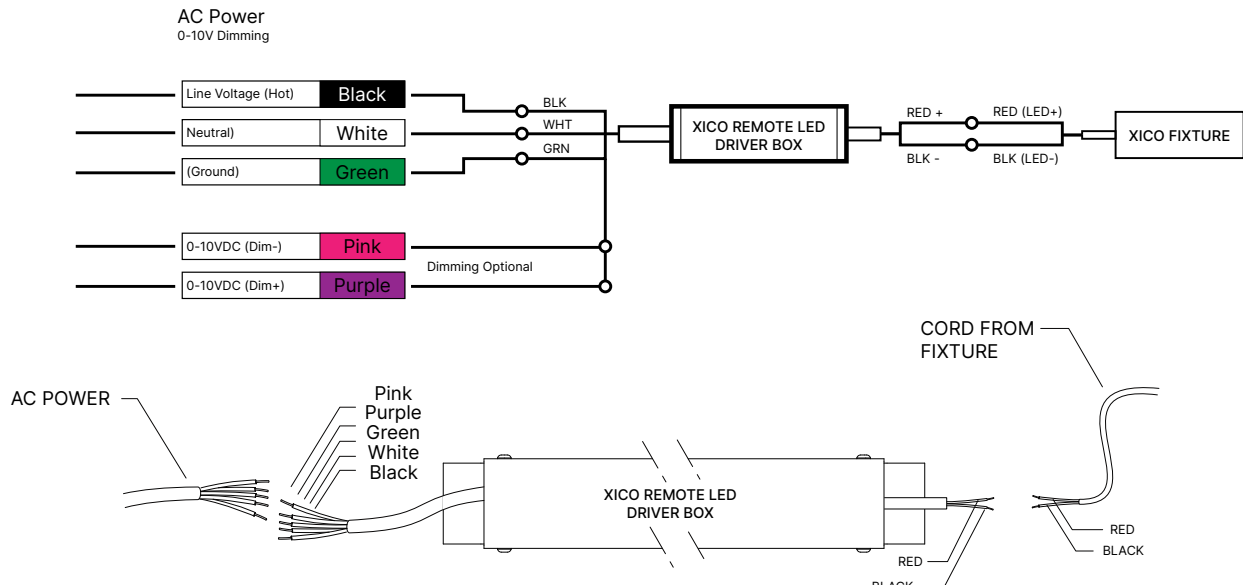
Wipe with a soft cloth only. Always avoid using harsh chemicals and/or cleaners.

# NANOBeam 45

NBE9545-P

## Wiring Diagram

### XICO Driver Box



### XICO Driver

