

# MICROSquare

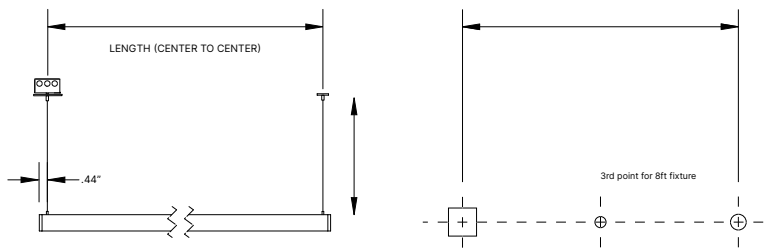
# MSQ140-P

## Pendant

### What to Know

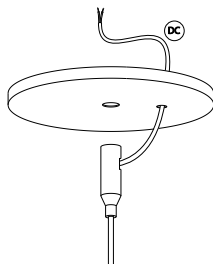
Risk of fire and electrical shock. Installation requires knowledge of electrical systems and should be installed by a qualified electrician. If not qualified, **DO NOT ATTEMPT INSTALLATION.**

- 1 Mark hole locations on the installation surface matching locations of the mounting hardware. Adjust cables to desired length and cut if needed.

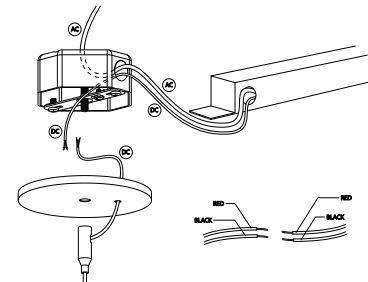


Suspension Distance (Center to Center)	
Fixture Length (Nominal)	Hole Distance
4FT, 2 suspension points	47.38"
6FT, 2 suspension points	71.25"
8FT, 2 suspension points	95.25"

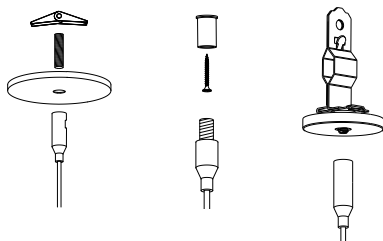
- 2 Attach the adjustable cable gripper to the canopy and feed the power cables through the gripper.



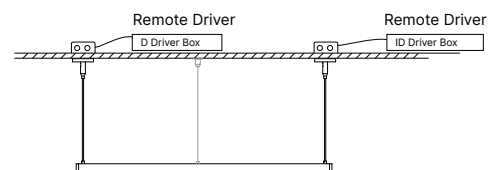
- 3 Feed the DC cables to the Junction box and secure the fixture using the appropriate hardware. Connect the DC cord to the supplied driver box. Connect AC power to the Driver Box. If your fixture has an Indirect light source, chose the correct driver for each power cord.



- 4 Repeat Step 3 at the other end of the fixture if there is an indirect light source. Otherwise, secure the non-powered end of the fixture to the ceiling with the appropriate hardware.



- 5 Final installation. Refer to the wiring diagram.

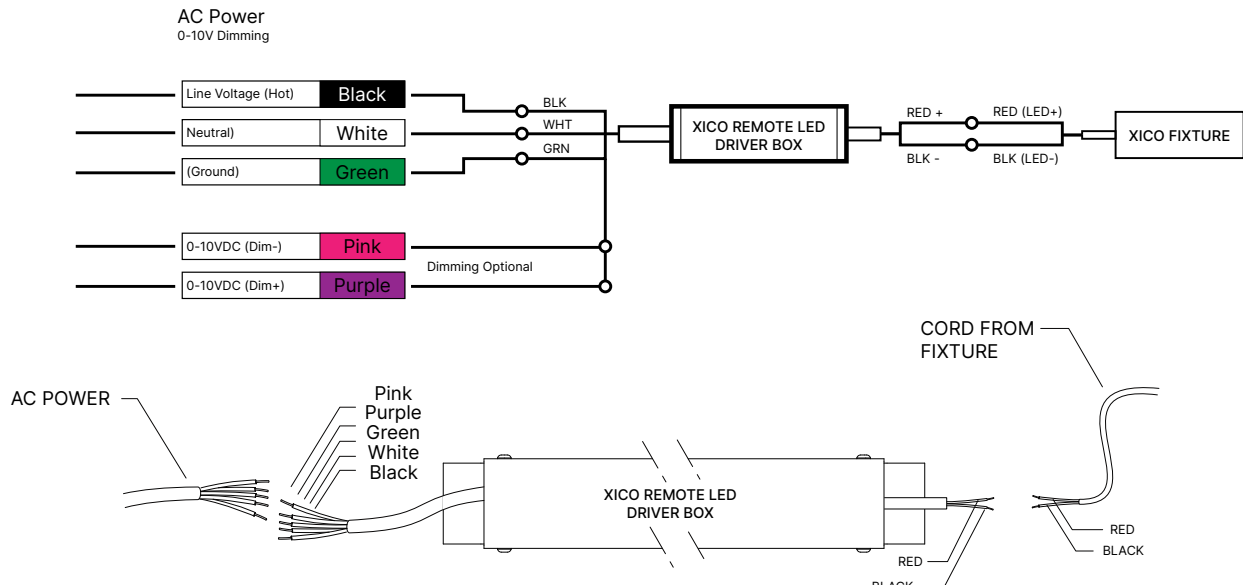


### Care Instructions:

Wipe with a soft cloth only. Always avoid using harsh chemicals and/or cleaners.

## Wiring Diagram

### XICO Driver Box



### XICO Driver

