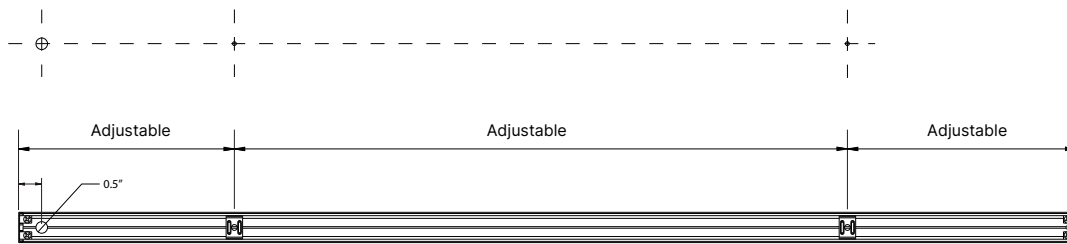


## Surface Mount

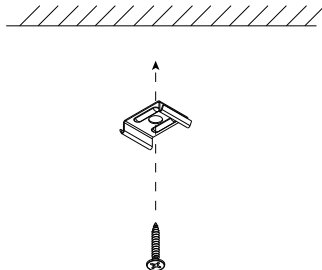
### What to Know

Risk of fire and electrical shock. Installation requires knowledge of electrical systems and should be installed by a qualified electrician. If not qualified, **DO NOT ATTEMPT INSTALLATION.**

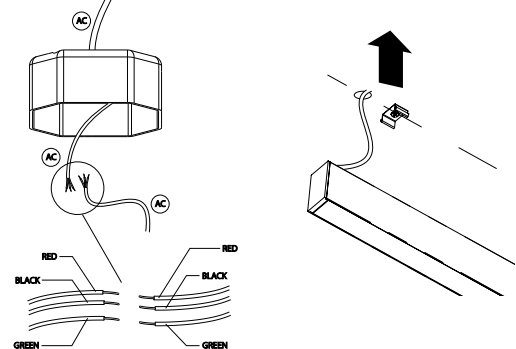
- 1 Mounting clips are adjustable. Locate a secured stud when possible for each bracket. Using a straight edge, mark the locations for each mounting clip.



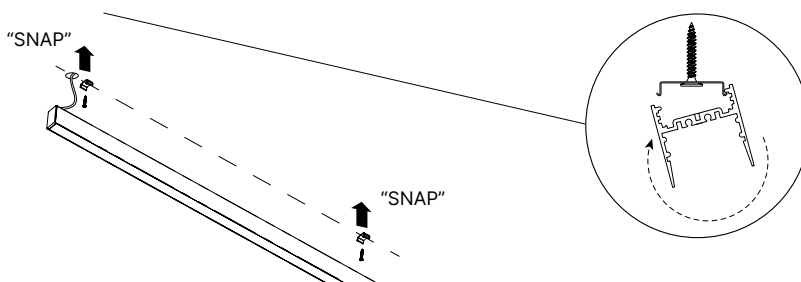
- 2 Secure the mounting clips to the mounting surface with the appropriate hardware.



- 3 Raise the fixture to the mounting surface and connect wires to approved power source/jbox. Refer to the wiring diagram.



- 4 Raise the fixture to the mounting surface and engage the mounting clips. The fixture will click when properly seated.



### Care Instructions:

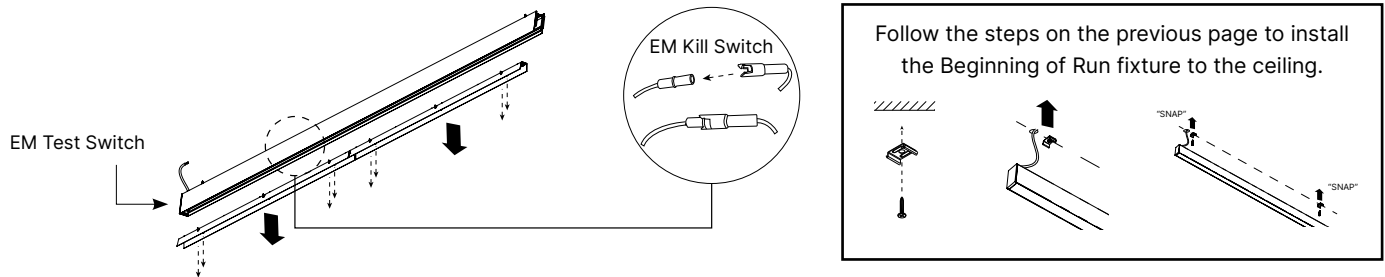
Wipe with a soft cloth only. Always avoid using harsh chemicals and/or cleaners.

## Surface Mount Continuous Run with Emergency Backup

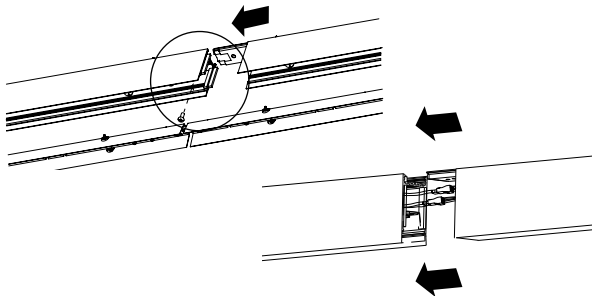
### What to Know

Risk of fire and electrical shock. Installation requires knowledge of electrical systems and should be installed by a qualified electrician. If not qualified, **DO NOT ATTEMPT INSTALLATION.**

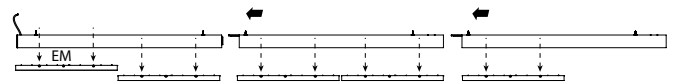
- 1 Locate the Beginning of Run fixture (with EM Test Switch in End Cap). Remove the Gear Trays from the fixture by removing the (4) screws in the Gear Tray. Locate the EM Kill Switch and join the connectors.



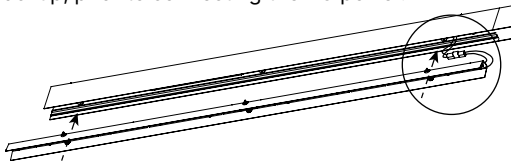
- 2 Raise the non-powered fixture to the ceiling and secure to the Ceiling Mount Clips. Join internal quick connects and fit inside fixture as you slide the fixtures together using the joiner bracket.



- 3 Tighten the Joiner Screw to the Joiner Bracket. The fixtures are now powered and secured to each other. Repeat this step for the End of Run fixture. You will only need to remove the Gear Tray(s) that is closest to each Joiner Bracket. This will differ based on your specific fixture lengths.

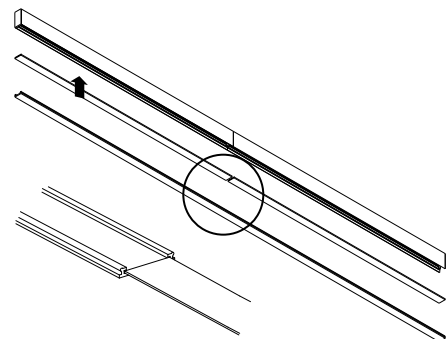


- 4 Bring each Gear Tray up to the matching fixture. Connect the quick connect cables and secure using (4) screws. The fixture may power on due to the emergency battery backup, prior to connecting the AC power.



Bring AC power to the fixture. Refer to the wiring diagram on the following page.

- 5 Snap the lens(es) into fixture body. This may differ depending on your specific fixture type.



### Care Instructions:

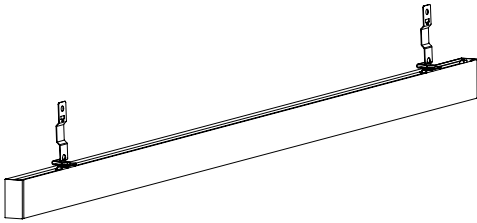
Wipe with a soft cloth only. Always avoid using harsh chemicals and/or cleaners.

## Surface Mount TBar

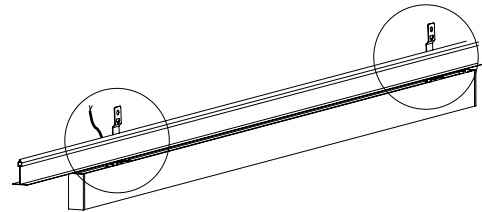
### What to Know

Risk of fire and electrical shock. Installation requires knowledge of electrical systems and should be installed by a qualified electrician. If not qualified, **DO NOT ATTEMPT INSTALLATION.**

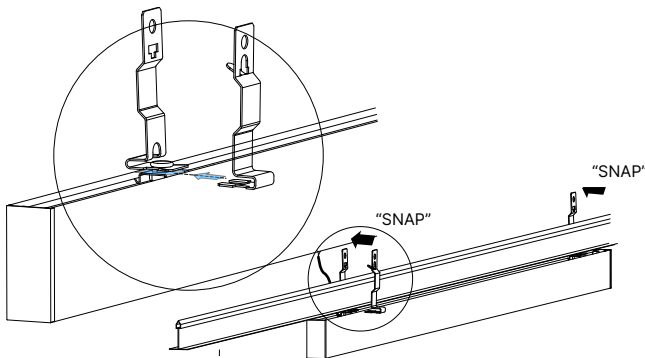
- 1 The fixture comes fully assembled with TBar clips for your grid ceiling framework, if specified.



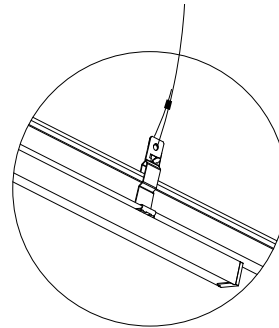
- 2 Bring fixture up to the desired location on the TBar. Allow wires to pass through framework.



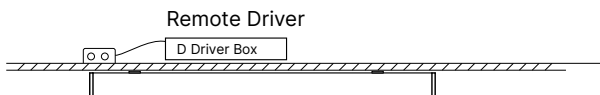
- 3 Engage the TBar clips by inserting the loose clip below the clip base that is mounted to the fixture. The clips will SNAP when fully engaged.



- 4 Secure the fixture to an appropriate structural support beam or hanger.



- 5 Locate and install the remote driver. Connect the fixtures DC cables to the Driver box. Connect AC power to the driver. Refer to the wiring diagram.



### Care Instructions:

Wipe with a soft cloth only. Always avoid using harsh chemicals and/or cleaners.

## Wiring Diagram

AC Power  
0-10V Dimming

