

NANOBeam 45

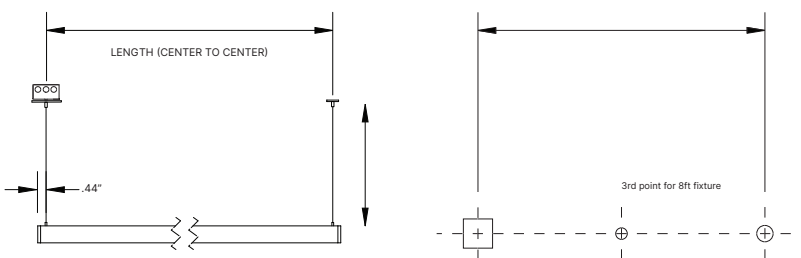
NBE9545-P

Pendant

What to Know

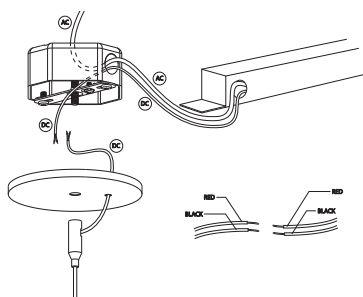
Risk of fire and electrical shock. Installation requires knowledge of electrical systems and should be installed by a qualified electrician. If not qualified, **DO NOT ATTEMPT INSTALLATION.**

- 1 Mark hole locations on the installation surface matching locations of the mounting hardware. Adjust cables to desired length and cut if needed.

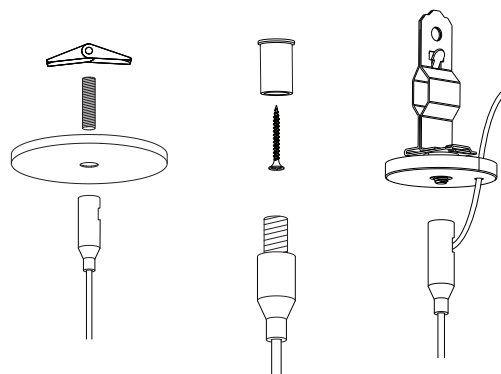


Suspension Distance (Center to Center)	
Fixture Length (Nominal)	Hole Distance
4FT, 2 suspension points	47.4"
6FT, 2 suspension points	71.4"
8FT, 3 suspension points	95.4", 47.7"

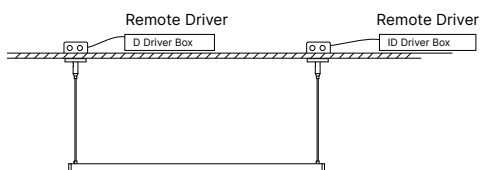
- 2 Locate and install the remote driver. Feed the AC and DC cables to the Junction box. Feed the fixture cables through the Ceiling Gripper/Canopy and connect to the driver box. If your fixture has an Indirect light source, chose the correct driver for each power cord. Secure canopy. Refer to the wiring diagram.



- 3 Fasten the fixture's non-power cable to the mounting surface using hardware rated for your application.



- 4 Final Installation



Care Instructions:

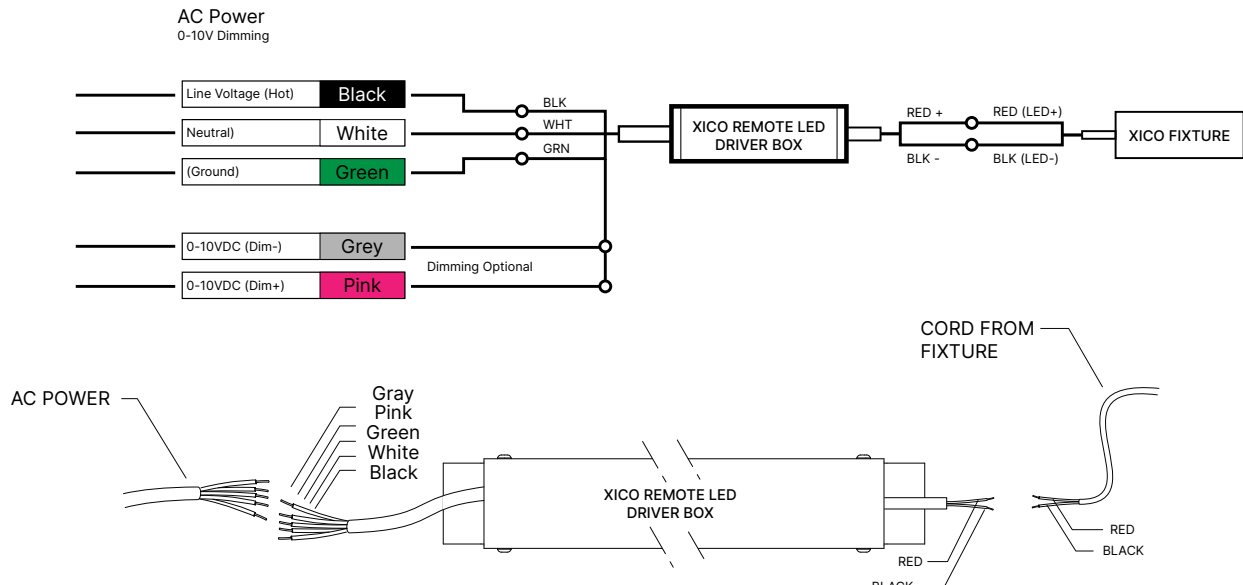
Wipe with a soft cloth only. Always avoid using harsh chemicals and/or cleaners.

NANOBeam 45

NBE9545-P

Wiring Diagram

XICO Driver Box



XICO Driver

