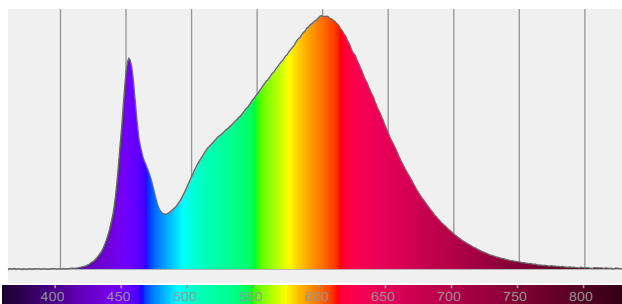
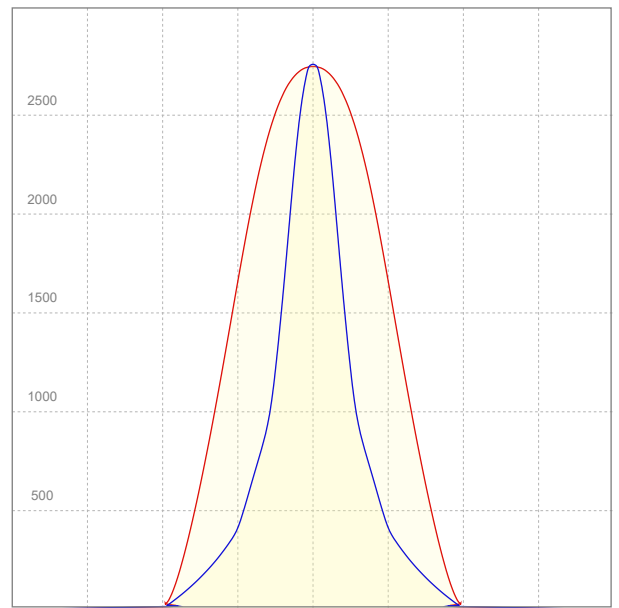
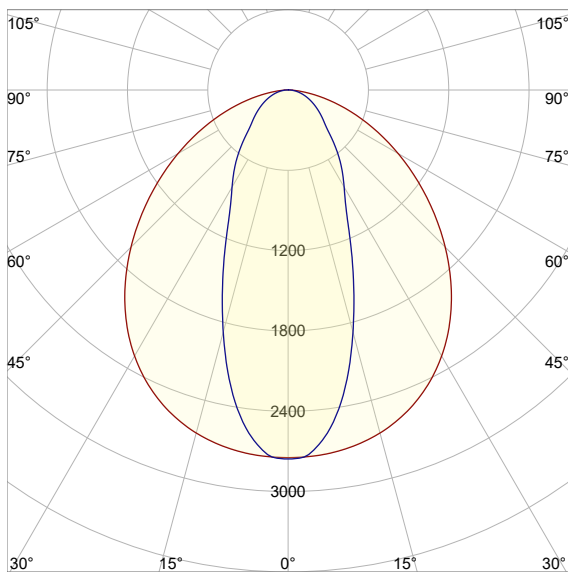
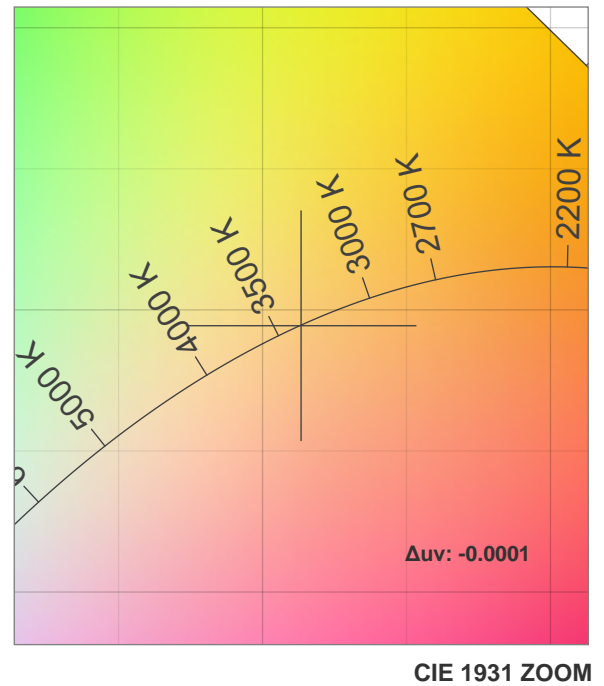
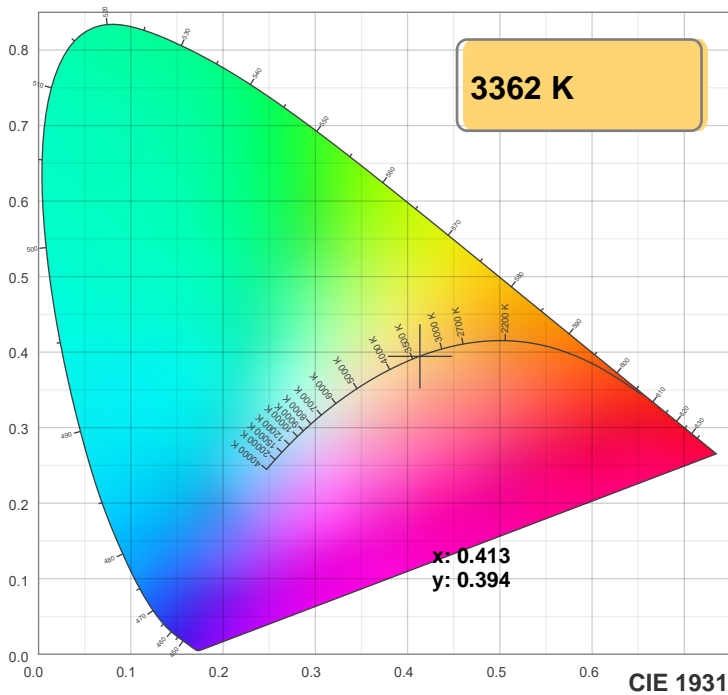


Light efficiency:**114 Lumen/Watt****Output: 4014 lm****Light quality:****CRI: 82.3****Peak: 2766 cd****Color temperature:****3362 K****Power: 35.2 W****PF: 1.0**

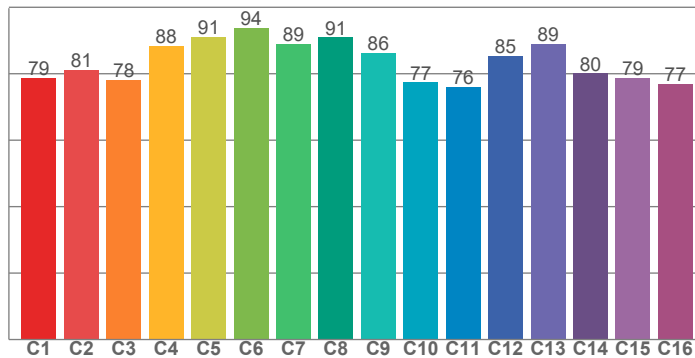
No photo

**Product name:****NANOBeam Regressed Medium 40°****Item number:****NBE9545****Configuration:****NBE9545-4FT-3580-WT-DRM40-1000LPF****Date and time:****8/3/2021 4:51:43 PM****Description:****Power Supply @ 930mA**

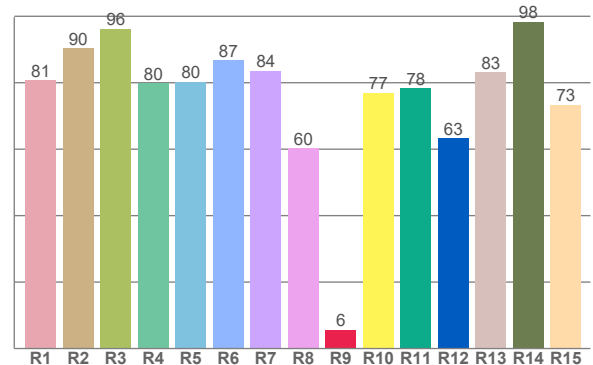
Color Details



TM-30: 83.6



CRI: 82.3 (R1-R8)



CRI R values, only R1-R8 are used to calculate final CRI value

R1	R2	R3	R4	R5	R6	R7	R8	R9	R10	R11	R12	R13	R14	R15
80.7	90.4	96.2	79.9	80.3	86.8	83.6	60.3	5.7	77.0	78.4	63.3	83.1	98.4	73.4

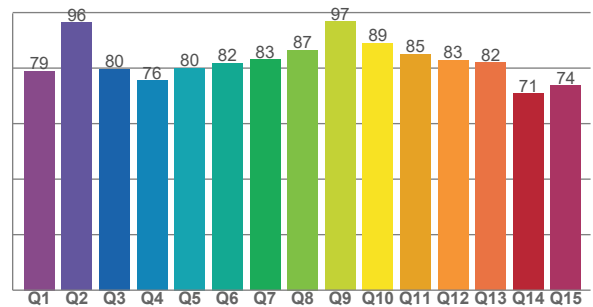
TM30 C values, 16 binned values out of total of 99 C values

C1	C2	C3	C4	C5	C6	C7	C8	C9	C10	C11	C12	C13	C14	C15	C16
78.8	81.2	78.1	88.3	91.2	93.9	88.9	91.0	86.4	77.4	76.1	85.4	89.0	80.1	78.8	77.0

CQS Q values

Q1	Q2	Q3	Q4	Q5	Q6	Q7	Q8	Q9	Q10	Q11	Q12	Q13	Q14	Q15
79.0	96.5	79.7	75.5	80.0	81.8	83.0	86.5	96.8	89.1	85.0	82.8	82.0	70.9	73.8

CQS: 81.4



Color parameters

Color temperature	Color rendering index	Red component	Color fidelity	Color gamut	Color quality scale	Color coordinate cie 1931	Color coordinate cie 1931	Color coordinate	Color coordinate	Color deviation from black body
CCT	CRI	CRI R9	TM30 Rf	TM30 Rg	CQS	x	y	u	v	Δuv
3362 K	82.3	5.7	83.6	95.1	81.4	0.413	0.394	0.239	0.343	-0.0001

TM-30 Details

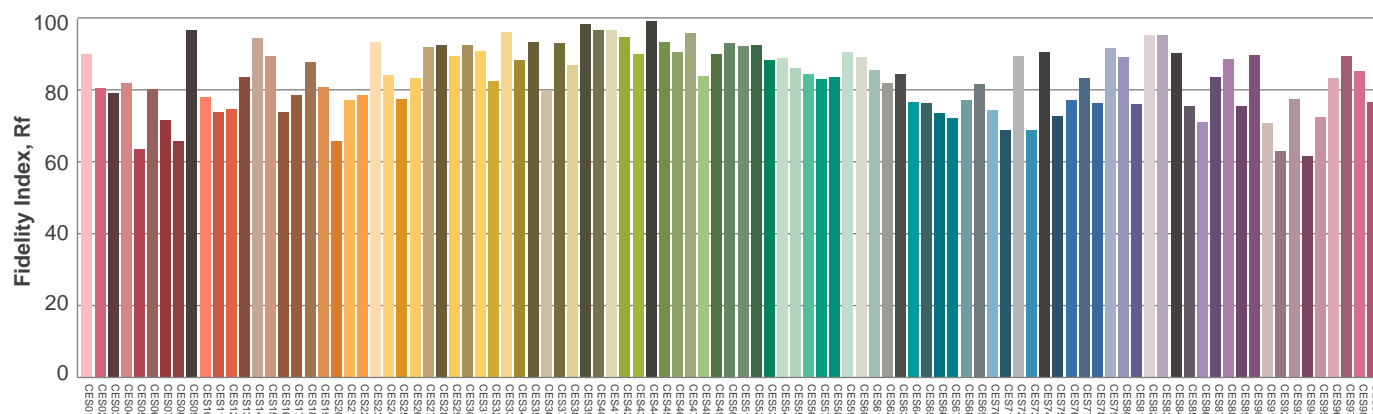
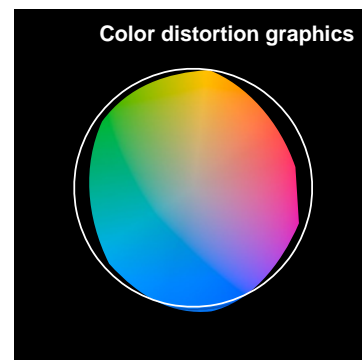
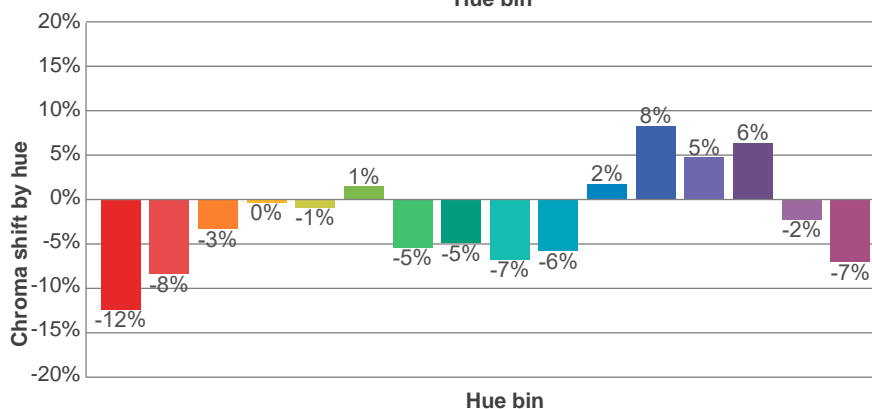
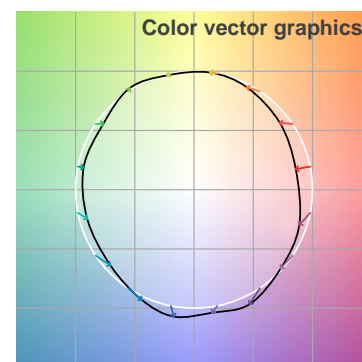
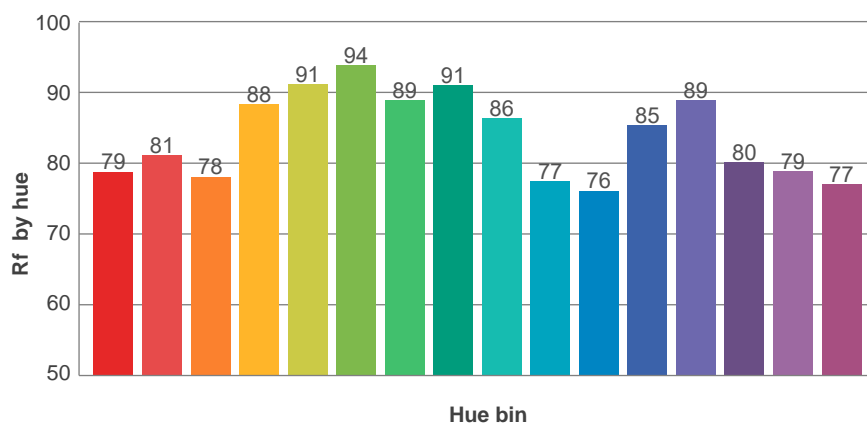
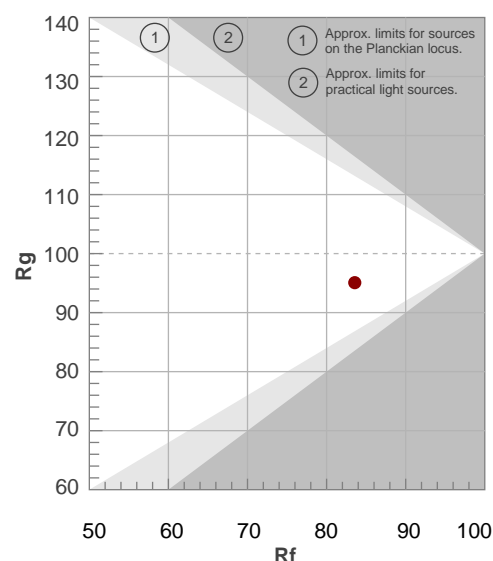
Rf 83.6

Fidelity index Rf

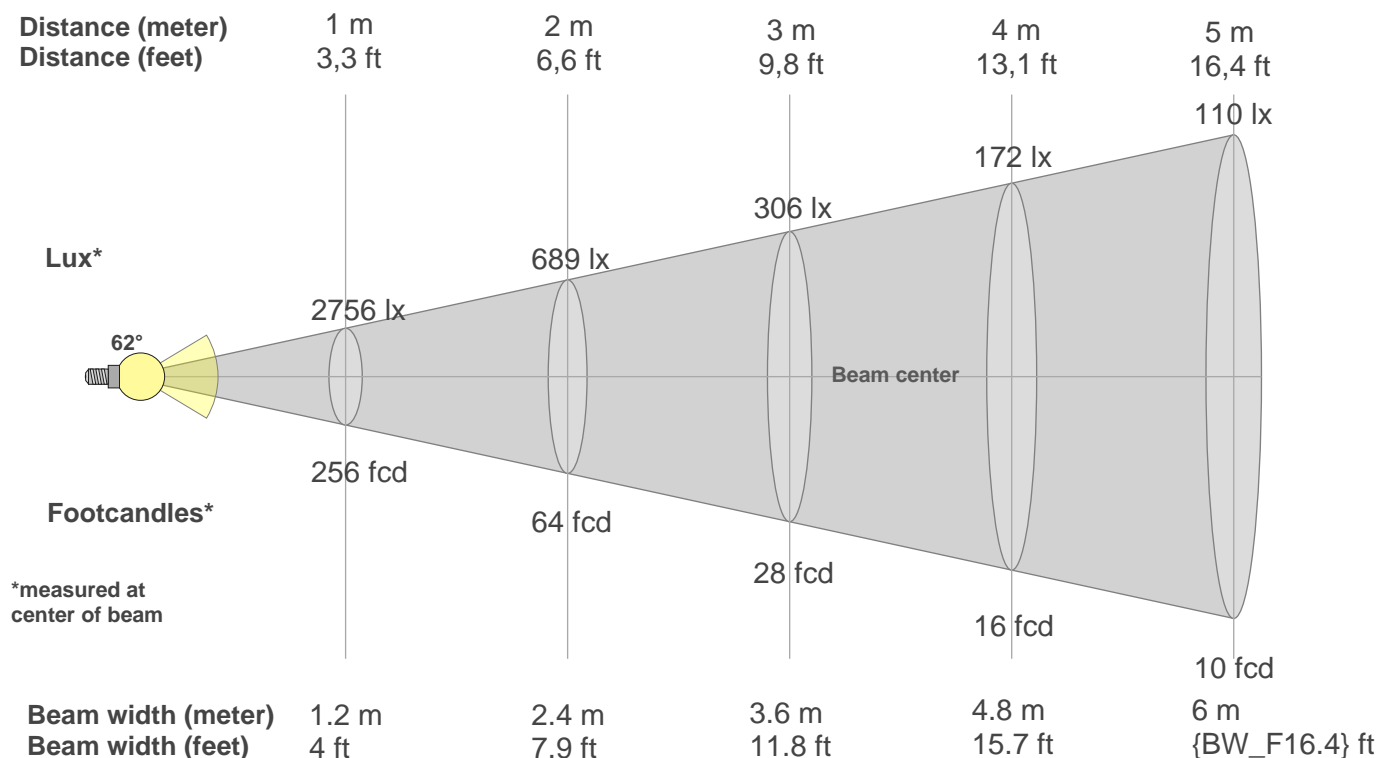
Rg 95.1

Gamut index Rg

Hue Bin	R _f	Shifts (%)	
		Chroma	Hue
1	79	-12%	0%
2	81	-8%	7%
3	78	-3%	11%
4	88	0%	6%
5	91	-1%	3%
6	94	1%	-2%
7	89	-5%	-4%
8	91	-5%	0%
9	86	-7%	6%
10	77	-6%	14%
11	76	2%	15%
12	85	8%	4%
13	89	5%	-5%
14	80	6%	-15%
15	79	-2%	-15%
16	77	-7%	-12%



Beam details



Beam intensities from 1-20m

1m	2m	3m	4m	5m	6m	7m	8m	9m	10m	11m	12m	13m	14m	15m	16m	17m	18m	19m	20m
3.3ft	6.6ft	9.8ft	13.1ft	16.4ft	19.7ft	23ft	26.2ft	29.5ft	32.8ft	36.1ft	39.4ft	42.7ft	45.9ft	49.2ft	52.5ft	55.8ft	59.1ft	62.3ft	65.6ft
2756lx	689lx	306lx	172lx	110lx	77lx	56lx	43lx	34lx	28lx	23lx	19lx	16lx	14lx	12lx	11lx	10lx	9lx	8lx	7lx
256.1fc	64fcd	28.5fcd	16fcd	10.2fcd	7.1fcd	5.2fcd	4fcd	3.2fcd	2.6fcd	2.1fcd	1.8fcd	1.5fcd	1.3fcd	1.1fcd	1fcd	0.9fcd	0.8fcd	0.7fcd	0.6fcd

Intensities in 0° c-plane

0°	5°	10°	15°	20°	25°	30°	35°	40°	45°	50°	55°	60°	65°	70°	75°	80°	85°	90°	95°
2756	2737	2707	2652	2565	2446	2293	2106	1892	1659	1418	1179	949	732	531	348	191	71	14	13
100%	99%	98%	96%	93%	89%	83%	76%	69%	60%	51%	43%	34%	27%	19%	13%	7%	3%	0%	0%

Intensities in 90° c-plane

0°	5°	10°	15°	20°	25°	30°	35°	40°	45°	50°	55°	60°	65°	70°	75°	80°	85°	90°	95°
2756	2653	2333	1872	1414	1044	837	690	544	414	339	281	229	183	141	102	67	34	15	14
100%	96%	85%	68%	51%	38%	30%	25%	20%	15%	12%	10%	8%	7%	5%	4%	2%	1%	1%	1%

Intensities in 180° c-plane

0°	5°	10°	15°	20°	25°	30°	35°	40°	45°	50°	55°	60°	65°	70°	75°	80°	85°	90°	95°
2756	2737	2707	2652	2565	2446	2293	2106	1892	1659	1418	1179	949	732	531	348	191	71	14	13
100%	99%	98%	96%	93%	89%	83%	76%	69%	60%	51%	43%	34%	27%	19%	13%	7%	3%	0%	0%

Intensities in 270° c-plane

0°	5°	10°	15°	20°	25°	30°	35°	40°	45°	50°	55°	60°	65°	70°	75°	80°	85°	90°	95°
2756	2653	2333	1872	1414	1044	837	690	544	414	339	281	229	183	141	102	67	34	15	14
100%	96%	85%	68%	51%	38%	30%	25%	20%	15%	12%	10%	8%	7%	5%	4%	2%	1%	1%	1%

UGR

Glare evaluation according to UGR

p Ceiling		70	70	50	50	30	70	70	50	50	30
p Walls		50	30	50	30	30	50	30	50	30	30
p Floor		20	20	20	20	20	20	20	20	20	20
Room size X Y		Viewing direction at right angles to lamp axis					Viewing direction parallel to lamp axis				
2H	2H	27.4	28.4	27.6	28.7	28.9	21.1	22.1	21.3	22.4	22.6
	3H	28.8	29.9	29.2	30.2	30.4	22.1	23.2	22.5	23.4	23.6
	4H	29.4	30.5	29.8	30.7	31.0	22.6	23.6	23.0	23.9	24.1
	6H	30.0	30.9	30.3	31.1	31.5	23.1	24.0	23.4	24.3	24.7
	8H	30.1	30.9	30.4	31.3	31.7	23.3	24.1	23.6	24.4	24.9
	12H	30.1	31.0	30.5	31.3	31.8	23.4	24.2	23.7	24.6	25.0
4H	2H	27.3	28.3	27.7	28.6	28.8	21.9	22.9	22.3	23.2	23.5
	3H	28.9	29.8	29.3	30.1	30.6	23.2	24.0	23.5	24.4	24.8
	4H	29.6	30.3	30.0	30.8	31.3	23.7	24.5	24.1	24.9	25.4
	6H	30.1	30.9	30.6	31.3	31.6	24.2	25.0	24.7	25.4	25.7
	8H	30.3	31.0	30.8	31.4	31.8	24.5	25.2	25.0	25.5	25.9
	12H	30.5	31.0	30.9	31.4	31.9	24.6	25.2	25.1	25.6	26.1
8H	4H	29.5	30.2	30.0	30.6	31.0	24.1	24.8	24.6	25.2	25.5
	6H	30.2	30.7	30.7	31.2	31.7	24.8	25.3	25.3	25.8	26.3
	8H	30.5	30.9	31.0	31.4	32.1	25.1	25.6	25.6	26.1	26.7
	12H	30.7	31.0	31.2	31.5	32.1	25.4	25.8	26.0	26.3	26.9
12H	4H	29.5	30.1	30.0	30.5	31.0	24.1	24.7	24.6	25.1	25.6
	6H	30.2	30.6	30.7	31.2	31.8	24.9	25.4	25.4	25.9	26.5
	8H	30.5	30.8	31.0	31.3	31.9	25.3	25.7	25.9	26.2	26.8
Variation of the observer position for the luminaire distance S											
S = 1.0H		0.3 / -0.3					0.2 / -0.3				
S = 1.5H		1.0 / -1.0					0.4 / -0.5				
S = 2.0H		1.8 / -1.7					0.6 / -0.8				
CIE 117-1995. Corrected glare indices referring to 4014 lm total luminous flux											