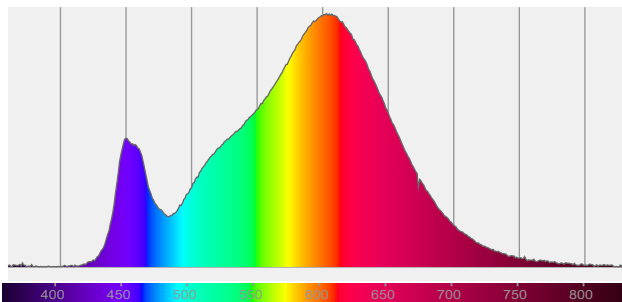
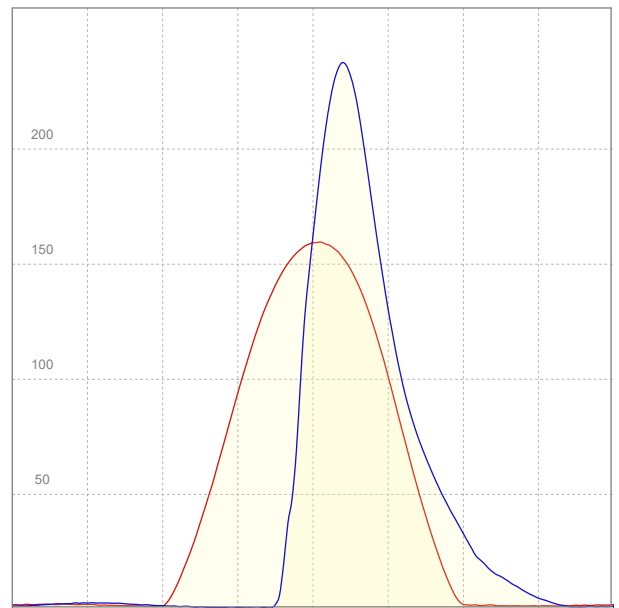
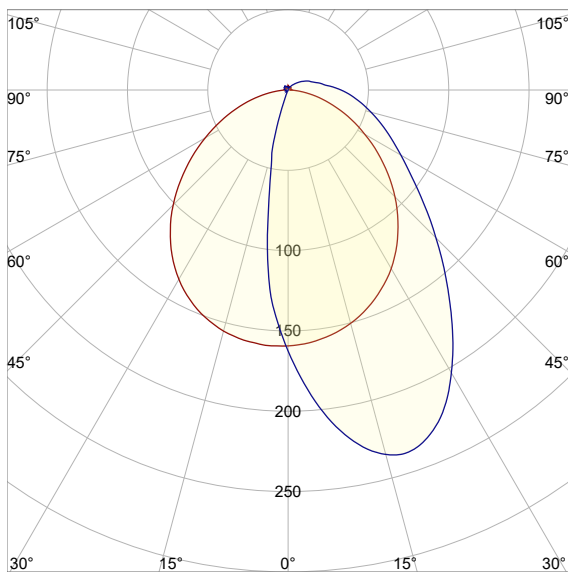
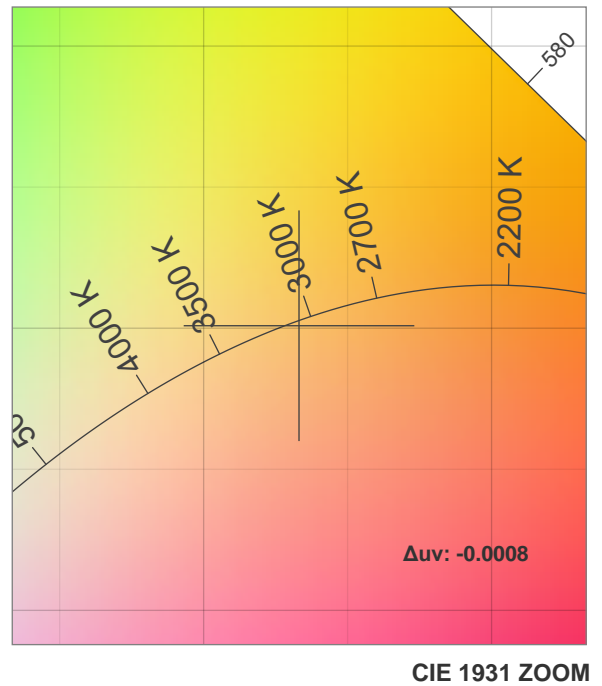
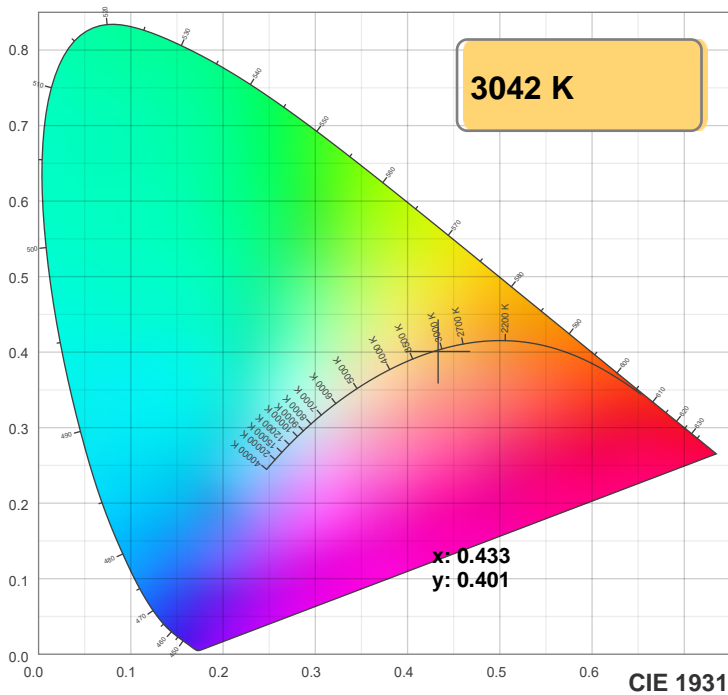
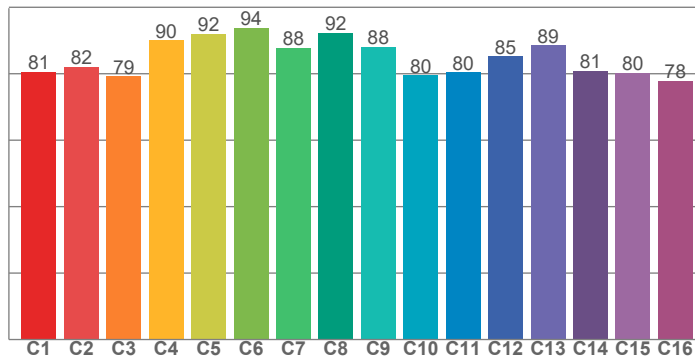


MICROWedge Asymmetric 40° at 15°**MWE140****Light efficiency:****146 Lumen/Watt****Output: 381 lm****Light quality:****CRI: 83.4****Peak: 238 cd****Color temperature:****3042 K****Power: 2.6 W****PF: 1.0****Product name:****MICROWedge Asymmetric 40° at 15°****Item number:****MWE140****Configuration:****MWE140-1FT-3080-WT-A4015-350LPF****Date and time:****3/22/2021 2:08:49 PM****Description:****MicroLine Cove 140 1ft****FOM01-0331****DC Power**

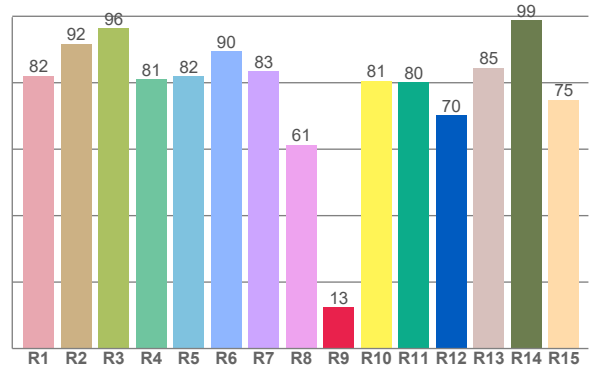
Color Details



TM-30: 84.9



CRI: 83.4 (R1-R8)



CRI R values, only R1-R8 are used to calculate final CRI value

R1	R2	R3	R4	R5	R6	R7	R8	R9	R10	R11	R12	R13	R14	R15
82.1	91.7	96.5	81.1	82.0	89.5	83.4	61.3	12.5	80.6	80.1	70.3	84.6	98.8	74.9

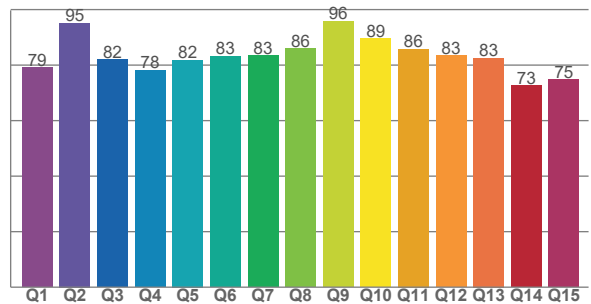
TM30 C values, 16 binned values out of total of 99 C values

C1	C2	C3	C4	C5	C6	C7	C8	C9	C10	C11	C12	C13	C14	C15	C16
80.5	82.1	79.2	90.0	91.9	93.8	87.8	92.4	88.1	79.5	80.5	85.2	88.5	80.8	80.3	77.8

CQS Q values

Q1	Q2	Q3	Q4	Q5	Q6	Q7	Q8	Q9	Q10	Q11	Q12	Q13	Q14	Q15
79.2	95.2	81.9	78.2	81.8	83.2	83.4	86.0	95.8	89.5	85.8	83.4	82.6	72.7	74.8

CQS: 82.3



Color parameters

Color temperature	Color rendering index	Red component	Color fidelity	Color gamut	Color quality scale	Color coordinate cie 1931	Color coordinate cie 1931	Color coordinate	Color coordinate	Color deviation from black body
CCT	CRI	CRI R9	TM30 Rf	TM30 Rg	CQS	x	y	u	v	Δuv
3042 K	83.4	12.5	84.9	95.8	82.3	0.433	0.401	0.249	0.346	-0.0008

MICROWedge Asymmetric 40° at 15°

MWE140

TM-30 Details

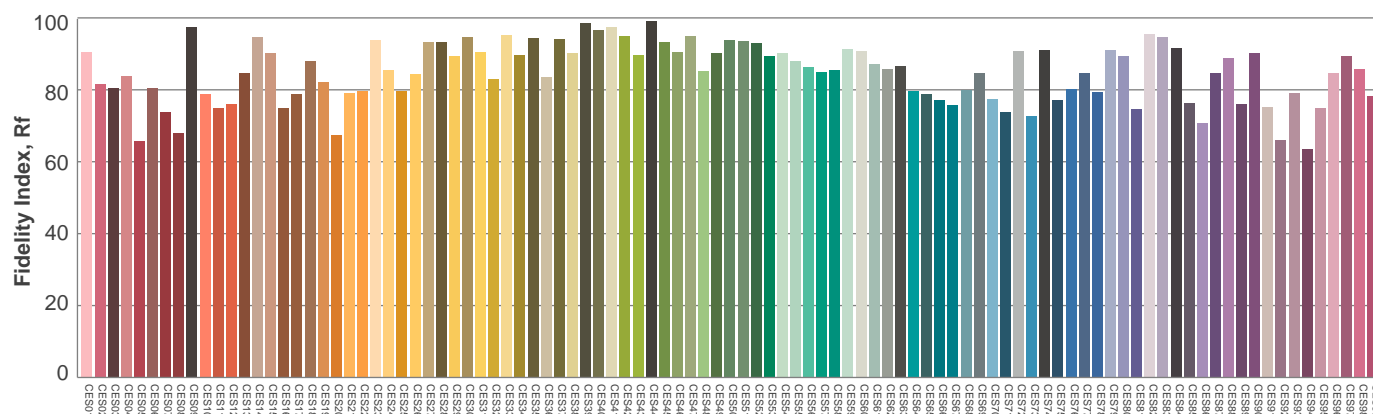
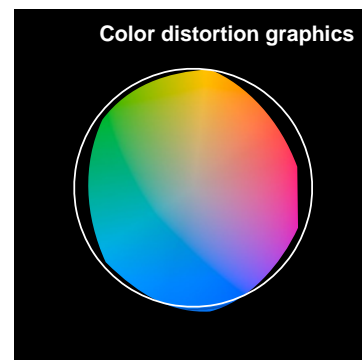
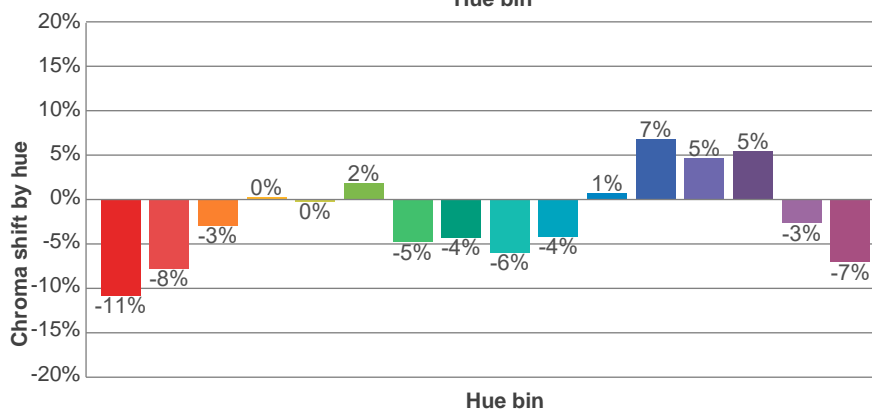
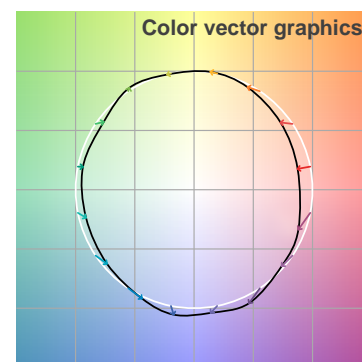
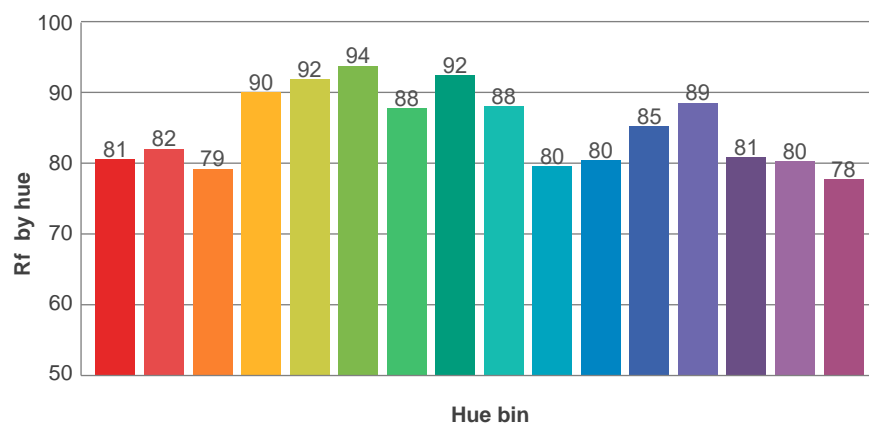
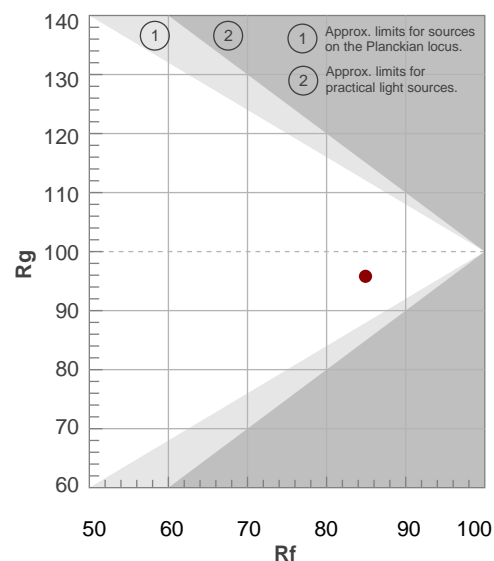
Rf 84.9

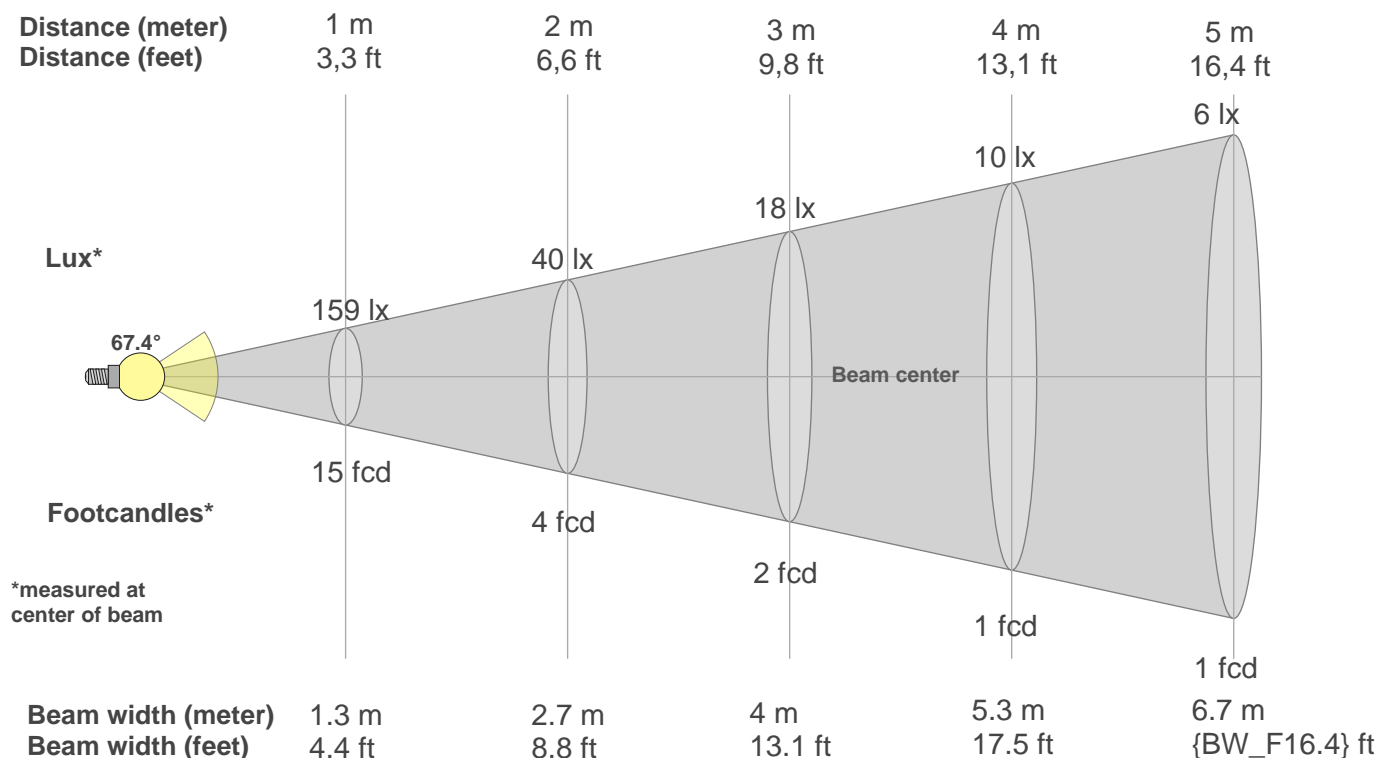
Fidelity index Rf

Rg 95.8

Gamut index Rg

Hue Bin	R _f	Shifts (%)	
		Chroma	Hue
1	81	-11%	0%
2	82	-8%	7%
3	79	-3%	11%
4	90	0%	6%
5	92	0%	3%
6	94	2%	-2%
7	88	-5%	-5%
8	92	-4%	-1%
9	88	-6%	5%
10	80	-4%	11%
11	80	1%	14%
12	85	7%	4%
13	89	5%	-7%
14	81	5%	-15%
15	80	-3%	-13%
16	78	-7%	-16%



Beam details**Beam intensities from 1-20m**

1m	2m	3m	4m	5m	6m	7m	8m	9m	10m	11m	12m	13m	14m	15m	16m	17m	18m	19m	20m
3.3ft	6.6ft	9.8ft	13.1ft	16.4ft	19.7ft	23ft	26.2ft	29.5ft	32.8ft	36.1ft	39.4ft	42.7ft	45.9ft	49.2ft	52.5ft	55.8ft	59.1ft	62.3ft	65.6ft
159lx	40lx	18lx	10lx	6lx	4lx	3lx	2lx	2lx	2lx	1lx	1lx	1lx	1lx	1lx	1lx	1lx	0lx	0lx	0lx
14.8fcd	3.7fcd	1.6fcd	0.9fcd	0.6fcd	0.4fcd	0.3fcd	0.2fcd	0.2fcd	0.1fcd	0.1fcd	0.1fcd	0.1fcd	0.1fcd	0.1fcd	0.1fcd	0.1fcd	0fcd	0fcd	0fcd

Intensities in 0° c-plane

0°	5°	10°	15°	20°	25°	30°	35°	40°	45°	50°	55°	60°	65°	70°	75°	80°	85°	90°	95°
159	158	155	150	144	137	128	118	106	94	81	68	55	43	32	22	13	6	1	1
100%	99%	97%	95%	91%	86%	81%	74%	67%	59%	51%	43%	35%	27%	20%	14%	8%	3%	1%	1%

Intensities in 90° c-plane

0°	5°	10°	15°	20°	25°	30°	35°	40°	45°	50°	55°	60°	65°	70°	75°	80°	85°	90°	95°
159	195	220	235	236	225	203	178	153	130	110	94	81	71	62	53	46	39	33	26
100%	122%	138%	148%	149%	141%	128%	112%	96%	82%	69%	59%	51%	44%	39%	34%	29%	25%	21%	17%

Intensities in 180° c-plane

0°	5°	10°	15°	20°	25°	30°	35°	40°	45°	50°	55°	60°	65°	70°	75°	80°	85°	90°	95°
159	160	158	155	151	144	136	126	114	101	87	73	60	47	35	24	14	6	2	2
100%	100%	99%	98%	95%	91%	86%	79%	72%	64%	55%	46%	37%	29%	22%	15%	9%	4%	1%	1%

Intensities in 270° c-plane

0°	5°	10°	15°	20°	25°	30°	35°	40°	45°	50°	55°	60°	65°	70°	75°	80°	85°	90°	95°
159	127	68	38	6	1	1	1	1	1	1	1	1	1	1	1	1	1	2	2
100%	80%	43%	24%	4%	0%	1%	0%	0%	1%	0%	1%	0%	1%	1%	1%	1%	1%	1%	1%

UGR

Glare evaluation according to UGR

p Ceiling	70	70	50	50	30	70	70	50	50	30
p Walls	50	30	50	30	30	50	30	50	30	30
p Floor	20	20	20	20	20	20	20	20	20	20
Room size X Y	Viewing direction at right angles to lamp axis					Viewing direction parallel to lamp axis				
n/a	n/a	n/a	n/a	n/a	n/a	n/a	n/a	n/a	n/a	n/a
n/a	n/a	n/a	n/a	n/a	n/a	n/a	n/a	n/a	n/a	n/a
n/a	n/a	n/a	n/a	n/a	n/a	n/a	n/a	n/a	n/a	n/a
n/a	n/a	n/a	n/a	n/a	n/a	n/a	n/a	n/a	n/a	n/a
n/a	n/a	n/a	n/a	n/a	n/a	n/a	n/a	n/a	n/a	n/a
n/a	n/a	n/a	n/a	n/a	n/a	n/a	n/a	n/a	n/a	n/a
n/a	n/a	n/a	n/a	n/a	n/a	n/a	n/a	n/a	n/a	n/a
n/a	n/a	n/a	n/a	n/a	n/a	n/a	n/a	n/a	n/a	n/a
n/a	n/a	n/a	n/a	n/a	n/a	n/a	n/a	n/a	n/a	n/a
n/a	n/a	n/a	n/a	n/a	n/a	n/a	n/a	n/a	n/a	n/a
n/a	n/a	n/a	n/a	n/a	n/a	n/a	n/a	n/a	n/a	n/a
n/a	n/a	n/a	n/a	n/a	n/a	n/a	n/a	n/a	n/a	n/a
n/a	n/a	n/a	n/a	n/a	n/a	n/a	n/a	n/a	n/a	n/a
n/a	n/a	n/a	n/a	n/a	n/a	n/a	n/a	n/a	n/a	n/a
n/a	n/a	n/a	n/a	n/a	n/a	n/a	n/a	n/a	n/a	n/a
n/a	n/a	n/a	n/a	n/a	n/a	n/a	n/a	n/a	n/a	n/a
n/a	n/a	n/a	n/a	n/a	n/a	n/a	n/a	n/a	n/a	n/a
n/a	n/a	n/a	n/a	n/a	n/a	n/a	n/a	n/a	n/a	n/a
n/a	n/a	n/a	n/a	n/a	n/a	n/a	n/a	n/a	n/a	n/a
Variation of the observer position for the luminaire distance S										
n/a	n/a					n/a				
n/a	n/a					n/a				
n/a	n/a					n/a				
CIE 117-1995. Corrected glare indices referring to 381 lm total luminous flux										