

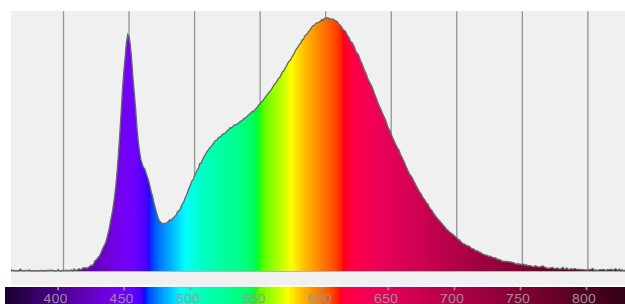
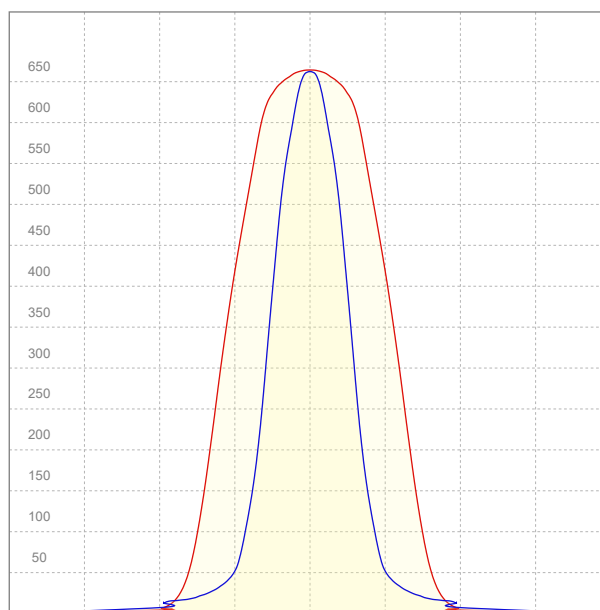
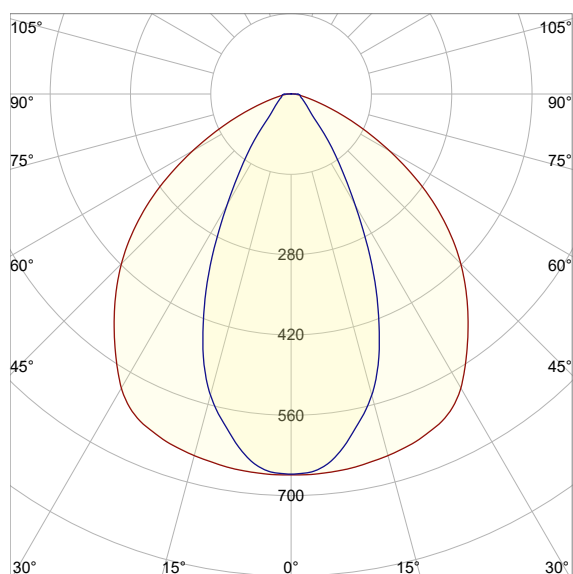
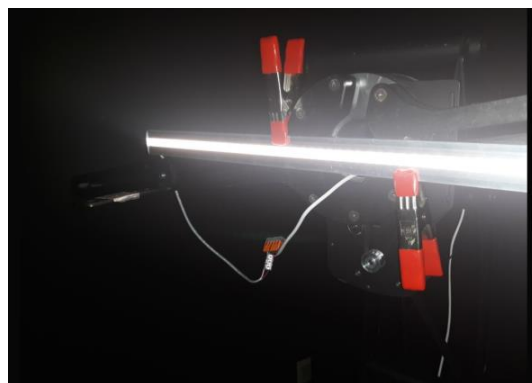
Light efficiency:

154 Lumen/Watt

Light quality:

CRI: 83.4

Color temperature:

3354 K**Output: 954 lm****Peak: 668 cd****Power: 6.2 W****PF: 1.0**

Product name:

MICROFlat Medium 50°

Item number:

MFL140

Configuration:

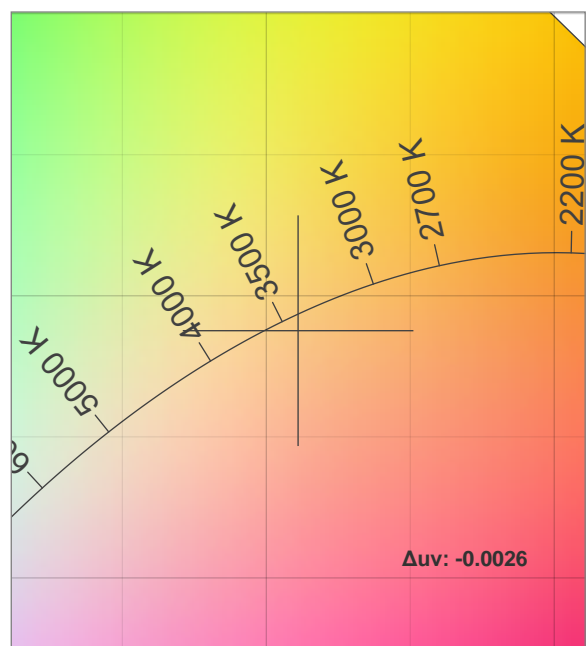
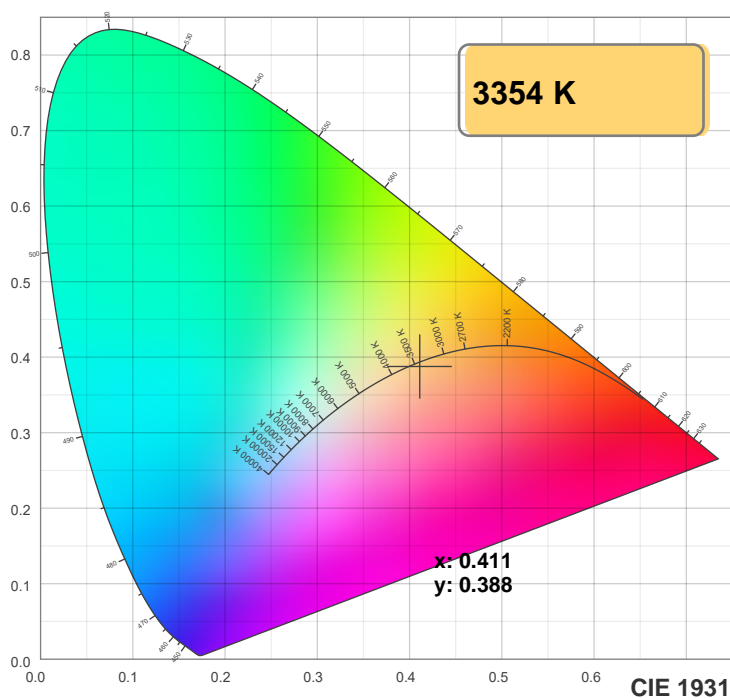
MFL140-2FT-3580-AL-DM50-500LPF

Date and time:

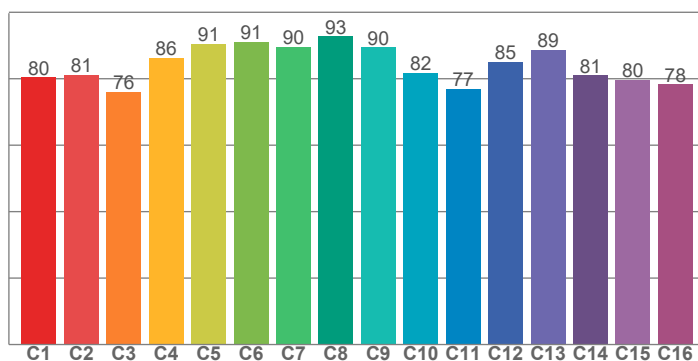
1/26/2021 10:09:08 AM

Description:

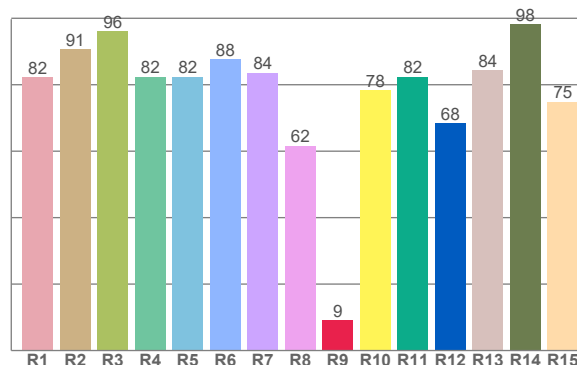
Color Details



TM-30: 84.0



CRI: 83.4 (R1-R8)



CRI R values, only R1-R8 are used to calculate final CRI value

R1	R2	R3	R4	R5	R6	R7	R8	R9	R10	R11	R12	R13	R14	R15
82.2	90.7	96.0	82.4	82.4	87.8	83.6	61.7	9.2	78.4	82.4	68.4	84.4	98.3	74.9

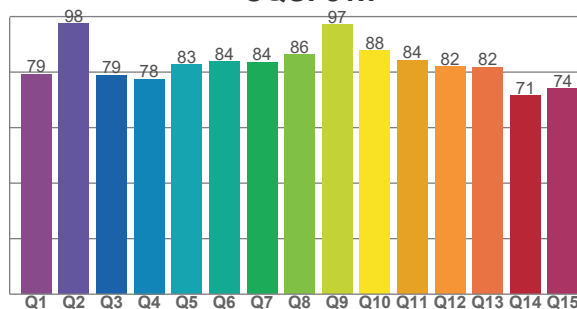
TM30 C values, 16 binned values out of total of 99 C values

C1	C2	C3	C4	C5	C6	C7	C8	C9	C10	C11	C12	C13	C14	C15	C16
80.5	81.2	76.0	86.3	90.6	91.1	89.6	92.8	89.5	81.8	77.0	85.2	88.7	81.0	79.7	78.3

CQS Q values

Q1	Q2	Q3	Q4	Q5	Q6	Q7	Q8	Q9	Q10	Q11	Q12	Q13	Q14	Q15
79.2	97.5	78.8	77.5	82.7	83.8	83.5	86.3	97.1	87.8	84.3	82.0	81.7	71.5	74.0

CQS: 81.7



Color parameters

Color temperature	Color rendering index	Red component	Color fidelity	Color gamut	Color quality scale	Color coordinate cie 1931	Color coordinate cie 1931	Color coordinate	Color coordinate	Color deviation from black body
CCT	CRI	CRI R9	TM30 Rf	TM30 Rg	CQS	x	y	u	v	Δuv
3354 K	83.4	9.2	84.0	97.8	81.7	0.411	0.388	0.241	0.341	-0.0026

TM-30 Details

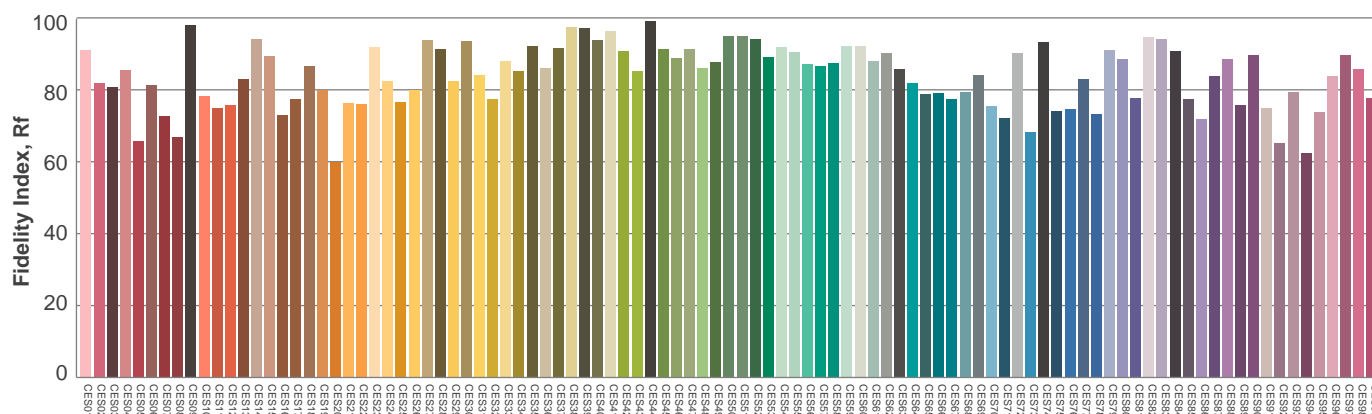
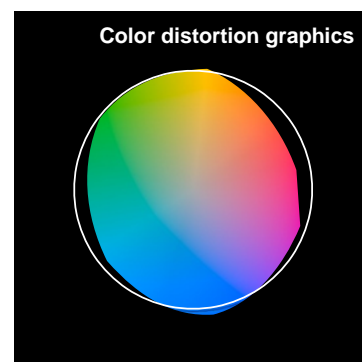
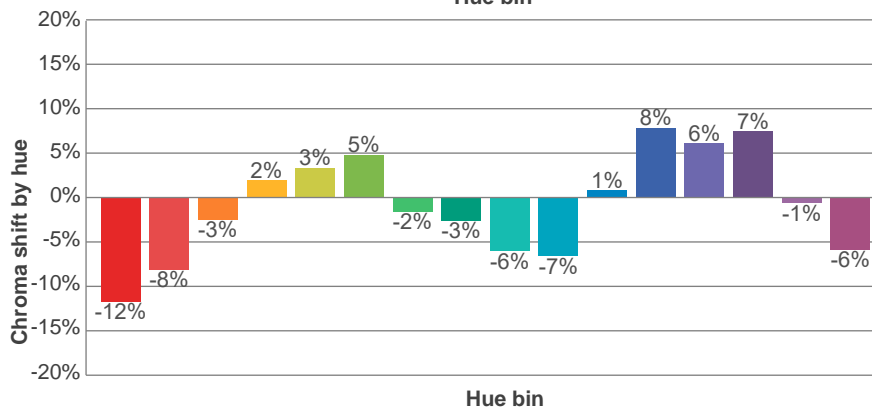
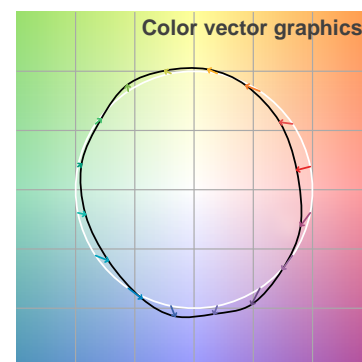
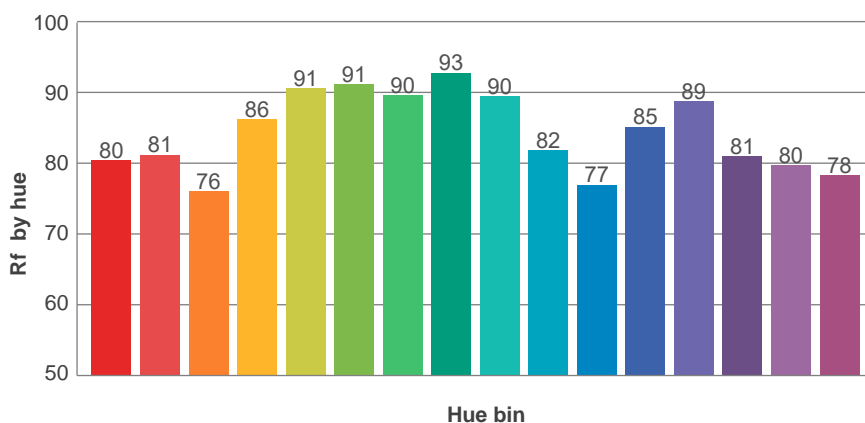
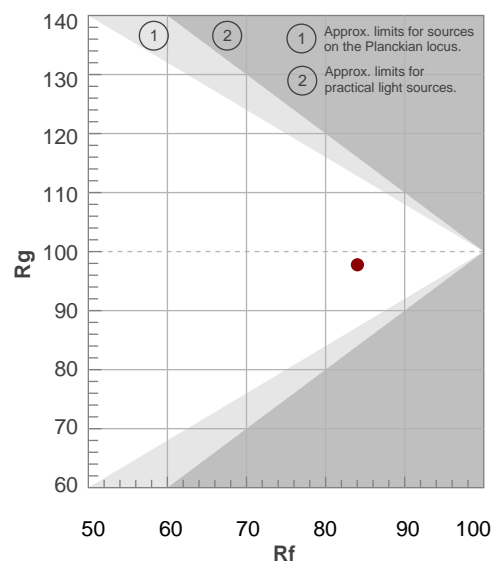
Rf 84.0

Fidelity index Rf

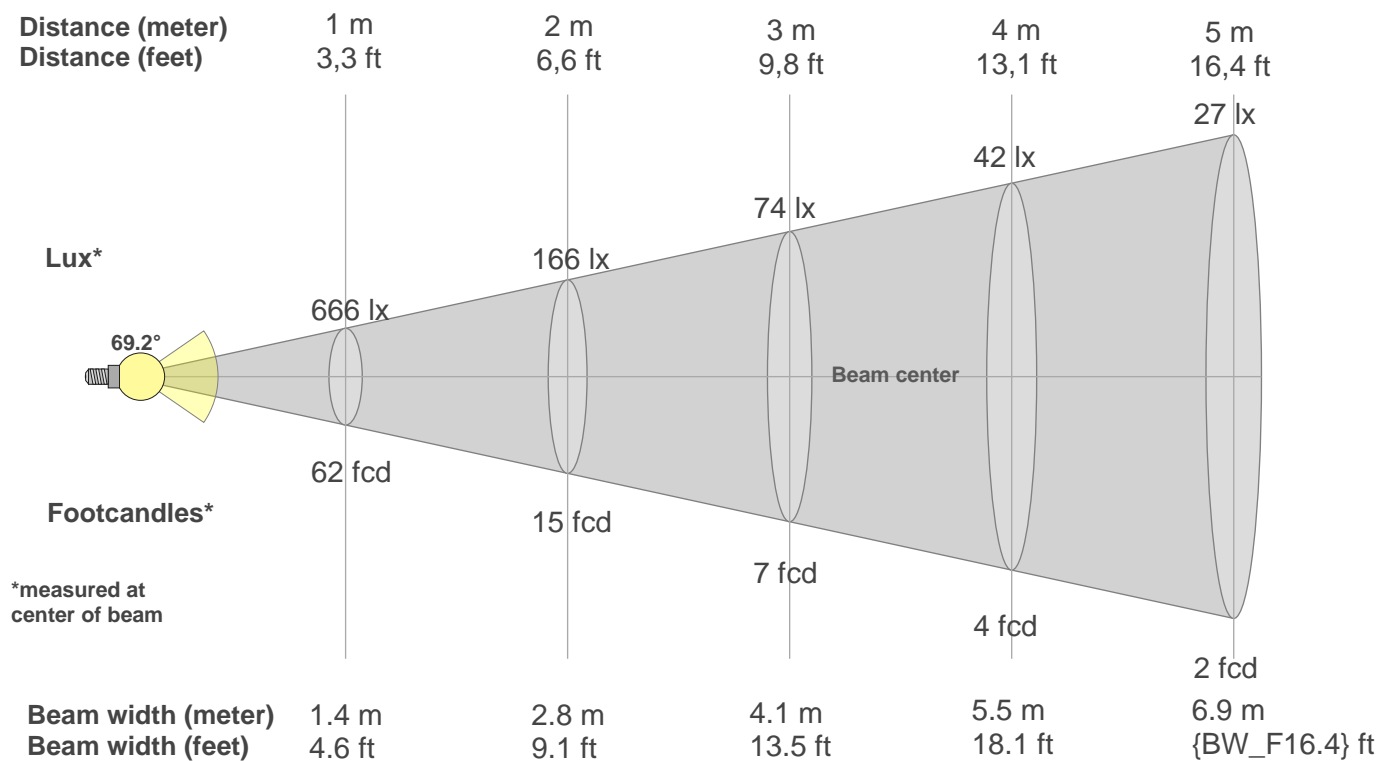
Rg 97.8

Gamut index Rg

Hue Bin	R _f	Shifts (%)	
		Chroma	Hue
1	80	-12%	-1%
2	81	-8%	7%
3	76	-3%	12%
4	86	2%	8%
5	91	3%	5%
6	91	5%	-2%
7	90	-2%	-6%
8	93	-3%	-3%
9	90	-6%	3%
10	82	-7%	10%
11	77	1%	14%
12	85	8%	5%
13	89	6%	-4%
14	81	7%	-13%
15	80	-1%	-14%
16	78	-6%	-12%



Beam details



Beam intensities from 1-20m

1m	2m	3m	4m	5m	6m	7m	8m	9m	10m	11m	12m	13m	14m	15m	16m	17m	18m	19m	20m
3.3ft	6.6ft	9.8ft	13.1ft	16.4ft	19.7ft	23ft	26.2ft	29.5ft	32.8ft	36.1ft	39.4ft	42.7ft	45.9ft	49.2ft	52.5ft	55.8ft	59.1ft	62.3ft	65.6ft
666lx	166lx	74lx	42lx	27lx	18lx	14lx	10lx	8lx	7lx	6lx	5lx	4lx	3lx	3lx	3lx	2lx	2lx	2lx	2lx
61.8fcd	15.5fcd	6.9fcd	3.9fcd	2.5fcd	1.7fcd	1.3fcd	1fcd	0.8fcd	0.6fcd	0.5fcd	0.4fcd	0.4fcd	0.3fcd	0.3fcd	0.2fcd	0.2fcd	0.2fcd	0.2fcd	0.2fcd

Intensities in 0° c-plane

0°	5°	10°	15°	20°	25°	30°	35°	40°	45°	50°	55°	60°	65°	70°	75°	80°	85°	90°	95°
666	663	659	652	643	627	591	535	478	418	351	276	198	127	72	36	18	10	4	4
100%	100%	99%	98%	97%	94%	89%	80%	72%	63%	53%	41%	30%	19%	11%	5%	3%	1%	1%	1%

Intensities in 90° c-plane

0°	5°	10°	15°	20°	25°	30°	35°	40°	45°	50°	55°	60°	65°	70°	75°	80°	85°	90°	95°
666	651	604	542	449	336	224	144	87	52	39	31	26	22	19	17	16	15	7	7
100%	98%	91%	81%	67%	50%	34%	22%	13%	8%	6%	5%	4%	3%	3%	3%	2%	2%	1%	1%

Intensities in 180° c-plane

0°	5°	10°	15°	20°	25°	30°	35°	40°	45°	50°	55°	60°	65°	70°	75°	80°	85°	90°	95°
666	663	659	652	643	627	591	535	478	418	351	276	198	127	72	36	18	10	4	4
100%	100%	99%	98%	97%	94%	89%	80%	72%	63%	53%	41%	30%	19%	11%	5%	3%	1%	1%	1%

Intensities in 270° c-plane

0°	5°	10°	15°	20°	25°	30°	35°	40°	45°	50°	55°	60°	65°	70°	75°	80°	85°	90°	95°
666	651	604	542	449	336	224	144	87	52	39	31	26	22	19	17	16	15	7	7
100%	98%	91%	81%	67%	50%	34%	22%	13%	8%	6%	5%	4%	3%	3%	3%	2%	2%	1%	1%

UGR

Glare evaluation according to UGR

p Ceiling		70	70	50	50	30	70	70	50	50	30
p Walls		50	30	50	30	30	50	30	50	30	30
p Floor		20	20	20	20	20	20	20	20	20	20
Room size X Y		Viewing direction at right angles to lamp axis					Viewing direction parallel to lamp axis				
2H	2H	32.4	33.4	32.6	33.6	33.8	23.2	24.2	23.4	24.4	24.7
	3H	33.1	34.1	33.5	34.3	34.5	24.0	25.0	24.4	25.2	25.4
	4H	33.3	34.2	33.7	34.5	34.7	24.6	25.6	25.0	25.9	26.1
	6H	33.4	34.3	33.7	34.6	34.9	25.6	26.5	25.9	26.8	27.1
	8H	33.4	34.3	33.8	34.6	35.0	26.2	27.0	26.5	27.3	27.7
	12H	33.4	34.2	33.8	34.6	35.0	26.9	27.7	27.3	28.0	28.5
4H	2H	32.2	33.1	32.6	33.4	33.6	24.2	25.2	24.6	25.4	25.7
	3H	33.1	33.9	33.5	34.2	34.7	25.3	26.1	25.6	26.4	26.8
	4H	33.3	34.0	33.7	34.5	35.0	26.0	26.7	26.4	27.2	27.7
	6H	33.5	34.2	34.0	34.6	34.9	27.1	27.8	27.6	28.2	28.5
	8H	33.5	34.2	34.1	34.6	34.9	27.7	28.4	28.3	28.8	29.1
	12H	33.6	34.1	34.1	34.5	35.0	28.5	29.1	29.0	29.5	30.0
8H	4H	33.3	33.9	33.8	34.3	34.7	26.7	27.4	27.2	27.7	28.1
	6H	33.6	34.1	34.1	34.5	35.0	28.0	28.5	28.5	29.0	29.5
	8H	33.7	34.1	34.2	34.6	35.3	28.9	29.3	29.4	29.8	30.4
	12H	33.8	34.2	34.4	34.7	35.3	29.8	30.2	30.4	30.7	31.3
12H	4H	33.2	33.8	33.7	34.2	34.7	26.8	27.3	27.3	27.7	28.2
	6H	33.6	34.0	34.1	34.5	35.2	28.3	28.7	28.8	29.2	29.8
	8H	33.7	34.1	34.3	34.6	35.2	29.1	29.5	29.7	30.0	30.6
Variation of the observer position for the luminaire distance S											
S = 1.0H		0.5 / -0.5					0.4 / -0.3				
S = 1.5H		1.6 / -1.5					0.7 / -0.3				
S = 2.0H		2.8 / -2.8					0.9 / -0.5				
CIE 117-1995. Corrected glare indices referring to 954 lm total luminous flux											