



Declare.

**Micro Series
XICO Lighting**

Final Assembly: Woburn, Massachusetts, USA
 Life Expectancy: 10+ Year(s)
 End of Life Option: Recyclable (99%), Landfill (0%)

Ingredients:
 Aluminum; Polymethyl methacrylate; 1,3-Benzenedicarboxylic acid, 1,3-dimethyl ester; polymer with 1,4-dimethyl 1,4-benzenedicarboxylate and 1,2-ethanediol; glass; oxide chemicals; Phenol; 4,4'-[methylenebis(2-oxo-1,3-phenylene)]-polymer with 2,2'-(1-methoxyethane)bis[4-(4-oxo-1,3-phenylene)]-polyethylene; Copper; Magnesium; Barium sulfate; Polyethylene; hexachloro siloxane; Iron; Chromium, metallic; Manganese; Titanium; Zinc

Living Building Challenge Criteria: Compliant

VOC Red List
 VOC Red List Free % Disclosed: 100% at 100ppm
 VOC Red List Approved VOC Content: Not Applicable
 Declared

ISO Interior Performance: Not Applicable
 ISO Responsible Sourcing: Not Applicable

XIC-0002
 EXP. 01 JUN 2023
 Original Issue Date: 2022

INTERNATIONAL LIVING FUTURE INSTITUTE™ enphibuildingdeclare.com



DESIGNED, ENGINEERED, AND
MANUFACTURED IN USA

Small form factor (sub 1.5") linear lighting

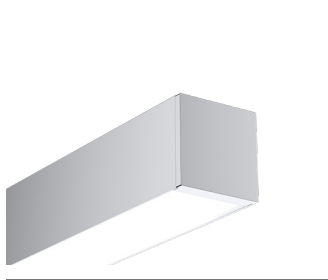
The Micro Series maximizes performance in a compact direct/indirect linear form factor. The range is designed with fully customizable choices for lumen output, CCT, CRI, and beam distribution.

SIZES - 1.1" & 1.4" with standard lengths of 2', 4', 6', 8' and specifiable lengths in 6" increments.

MOUNTING - Pendant, Surface, Slot, or ADA-compliant Wall Mount.

OUTPUT - Direct and/or Indirect, Choice of CRI, BIOS, RGB, RGBW, Tunable White, White.

DRIVER - Dimmable 0-10V to 1%/0.1%; DALI & DMX; Serviceable integral driver available in MICROBeam.



MICROSquare

Square profile: 1.4" (35mm) x 1.4" (35mm)



MICROBeam

Rectangular profile: 1.4" (35mm) x 2.36" (60mm)



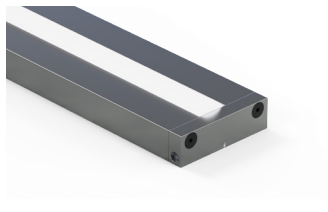
MICROTriangle

Triangle profile: 1.4" (35mm) x 1.4" (35mm)



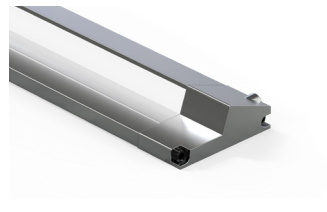
MICROSlot

Square profile: 1.4" (35mm) plus flange x 1.4" (35mm)



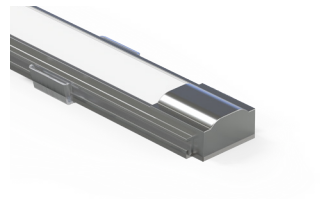
MICROFlat

1.4" (35mm) nominal width ultra-low profile linear led rail system



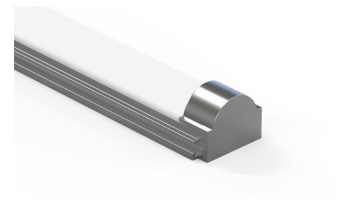
MICROWedge

1.4" (35mm) nominal width ultra-low profile linear led rail system



MICROCosine

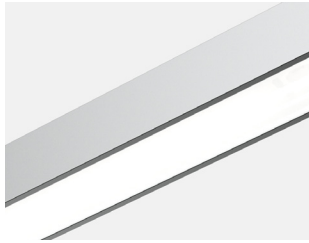
1.1" (29mm) nominal width ultra-low profile linear led rail system



MICRODiffuse

1.1" (29mm) nominal width ultra-low profile linear led rail system

Optical Performance



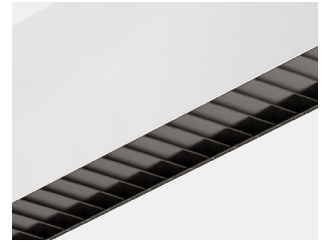
Flush Lens



Regressed Lens



Micro Cavity Optic



Baffle

Specifications

	MICROBeam	MICROSquare	MICROSquare MCO	MICROSlot	MICROFlat	MICROWedge	MICROCosine	MICRODiffuse
Dimension	1.4"	1.4"	1.4"	1.4"	1.4"	1.4"	1.2"	1.2"
Surface Mount	•	•	•	•	•	•	•	•
Recessed				•				
Mud-In	•	•	•					
Task or Cove			•		•	•	•	•
Direct or Indirect	•	•	•	•	•	•	•	•
Direct and Indirect	•	•	•					
Custom/Programmable Lumen Outputs	•	•	•	•	•	•	•	•
BIOS® Illuminated	•	•		•				•
Continous Optics	•	•		•				
Serviceable Integral Driver	•							
Low-Glare Options	Baffles UGR<16	Baffles UGR<16	MCO UGR<10	Baffles UGR<16				
Regressed Lens Option	•	•		•				

SmartBeam® - Beam Distributions

Wide 100°-120°	•	•		•				•
Medium 40°-90°	•	•		•	•			•
Batwing 60°	•	•		•			•	
MCO 20°-40°			•					
Asymmetric	•	•		•		•		
Wall Wash	•	•		•		•		
Graze	•	•		•		•		
Cosine® Indirect 120°-150°	•	•	•				•	
Ceiling Wash Indirect	•	•	•				•	



Declare.

